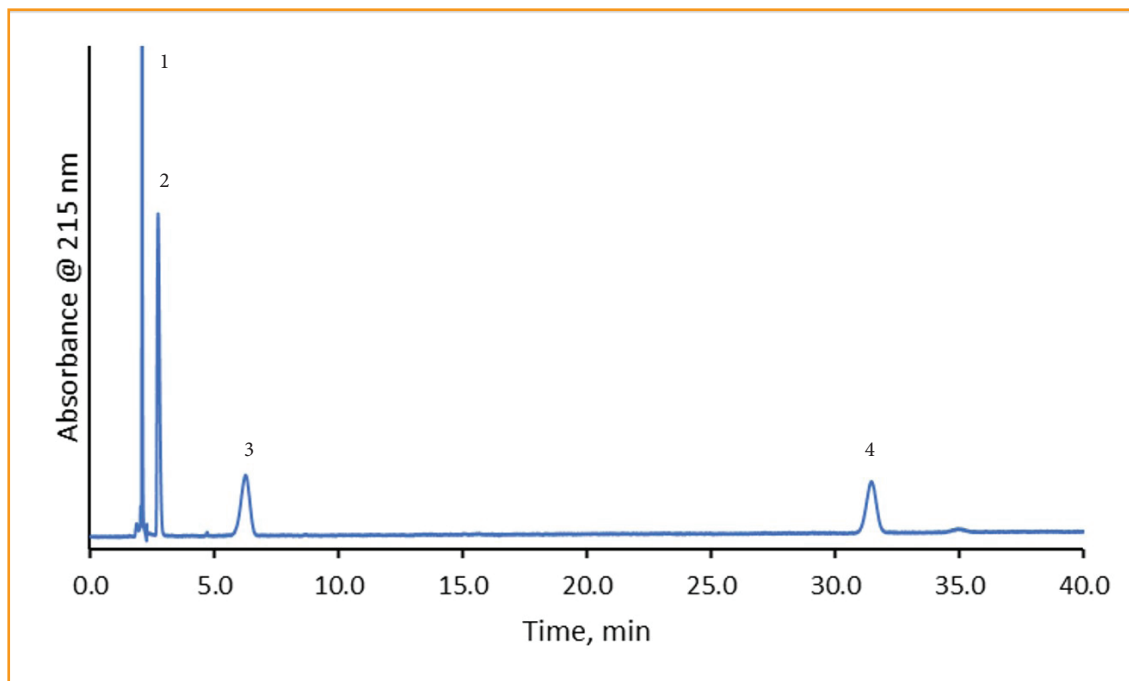




## Enalapril Maleate According to Chinese Pharmacopeia (CP)

267-CP



### TEST CONDITIONS:

**Column:** HALO 90 Å C8, 5 µm, 4.6 x 250 mm  
**Part Number:** 95814-908  
**Mobile Phase A:** 10mM Phosphate buffer pH: 2.2  
**Mobile Phase B:** Acetonitrile  
**Isocratic:** 25% B  
**Flow Rate:** 1.0 mL/min  
**Back Pressure:** 137 bar  
**Temperature:** 50 °C  
**Detection:** UV: 215 nm  
**Injection Volume:** 20 µL  
**Sample Solvent:** mobile phase  
**Data Rate:** 100 Hz  
**Response Time:** 0.025 sec.  
**Flow Cell:** 1 µL  
**LC System:** Shimadzu Nexera X2

### PEAK IDENTITIES

1. Maleic Acid
2. Enalaprilat (Impurity I)
3. Enalapril
4. Enalapril Diketopiperazine (Impurity II)

Enalapril is used to treat high blood pressure. A separation of enalapril along with its impurities is separated on a HALO® C8 column following the Chinese Pharmacopoeia method. High resolution along with low tailing factors are achieved.