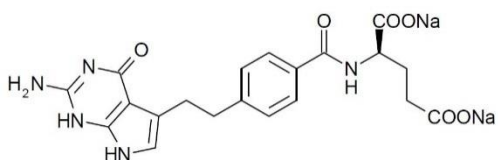


Enantiomeric Purity of Pemetrexed

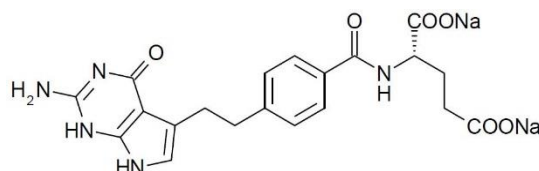
Application #AN6100

Conditions

Column:	ACE Excel 5 C18
Dimensions:	250 x 4.6 mm
Part Number:	EXL-121-2546U
Buffer:	8 g β -cyclodextrin, 15 mL triethylamine and 6 mL phosphoric acid added to 900 mL water. Adjusted to pH 6.0 and diluted to 1000 mL with water.
Mobile phase:	Buffer:MeCN (95:5 v/v)
Flow Rate:	1.0 mL/min
Injection:	20 μ L
Temperature:	Ambient
Detection:	UV, 230 nm
Sample:	0.24 mg/mL pemetrexed and 0.16 μ g/mL impurity E
Monograph method:	EP 9.0



1. Pemetrexed Impurity E



2. Pemetrexed

