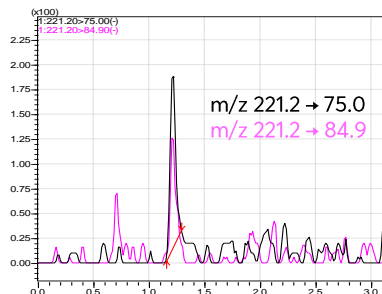
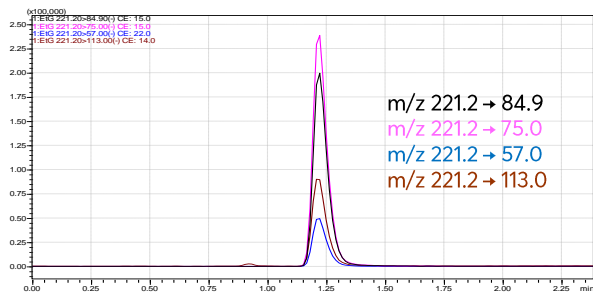
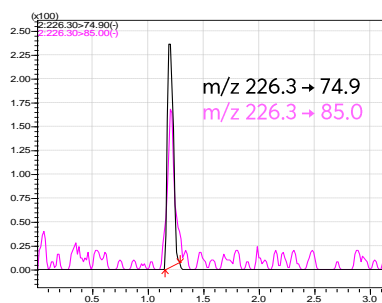
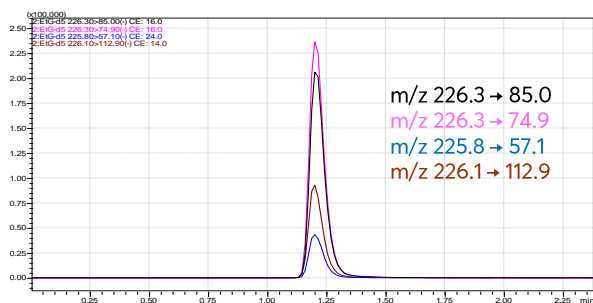


Application note #1100

Ethyl Glucuronide in Water by LC-MS/MS



Ethyl glucuronide (EtG)
LOQ in H₂O 300 fg on-column



Ethyl glucuronide-d5 (EtG-d5)

Method Details

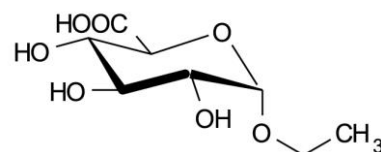
CONDITIONS

Column: Avantor® ACE® Excel 2 C18-PFP
 Particle Size: 2 µm
 Dimensions: 100 x 2.1 mm
 Mobile Phase: A: 0.05% formic acid in H₂O
 B: MeOH

Gradient:

Time (mins)	% B
0.00	5
4.00	70
6.00	95
7.00	95
7.01	5

Flow Rate: 0.4 mL/min
 Injection: 3 µL
 Temperature: 40 °C
 Detection: Shimadzu LCMS-8050
 ESI voltage: -3 kV
 Desolvation line: 250 °C
 Interface heater: 380 °C
 Nebulizing gas: 3 L/min
 Heat block: 400 °C



Ethyl glucuronide

ORDERING TABLE

Product	Details	Size	Part Number
Avantor® ACE® Excel 2 C18-PFP	UHPLC Column	100 x 2.1 mm	EXL-1010-1002U

Reproduced with permission of Shimadzu Europa GmbH. Analysed on Shimadzu Nexera X2.