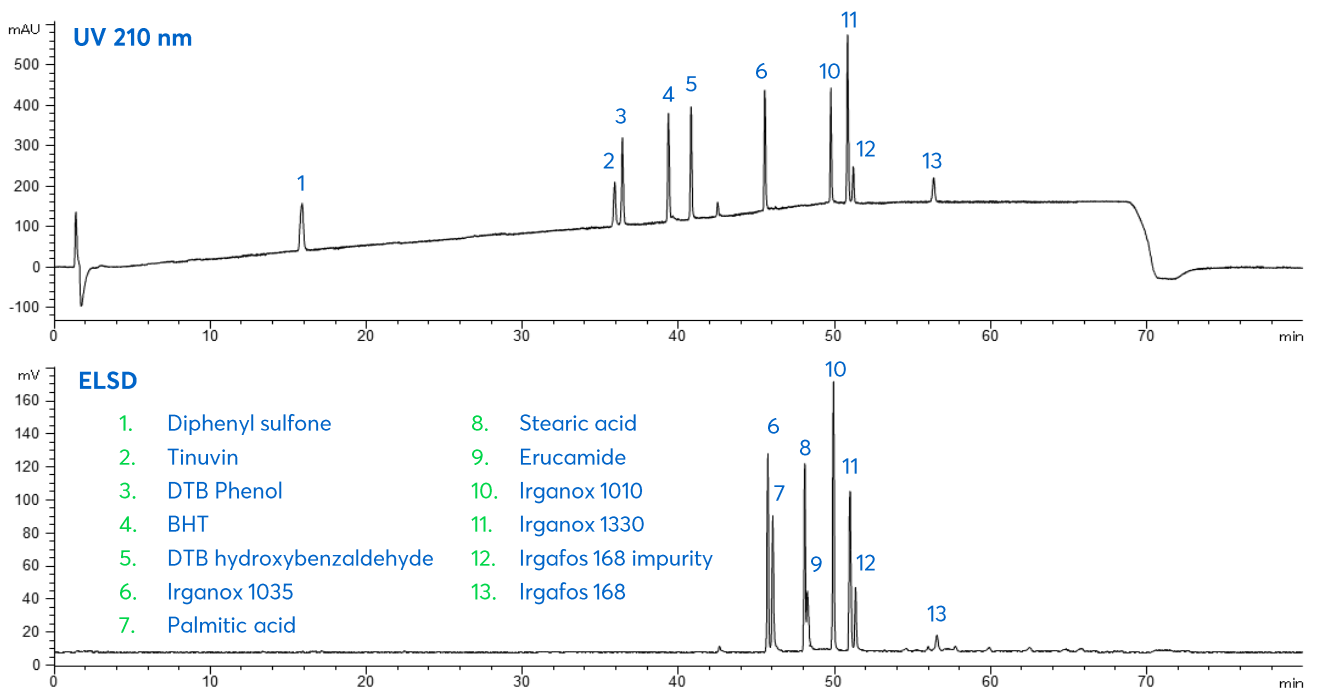


# Application note #6420

## Separation of Extractables and Leachables



# Method Details

## CONDITIONS

Column: Avantor® ACE® Excel® 3 C18  
 Particle Size: 3 µm  
 Dimensions: 150 x 2.1 mm  
 Mobile Phases: A: 0.1% Formic acid in H<sub>2</sub>O  
 B: 0.1% Formic acid in MeOH

Gradient:

Time (mins)	%B
0	30
45	100
65	100
66	30
80	30

Flow Rate: 0.3 mL/min  
 Injection: 5 µL  
 Temperature: 35 °C  
 Detection: UV, 210 nm  
 ELSD, Evaporation 30 °C, Nebuliser 90 °C, gas flow 1.0 SLM

## ORDERING TABLE

Product	Details	Size	Part number
Avantor® ACE® Excel® 3 C18	HPLC column	150 x 2.1 mm	EXL-111-1502U
Methanol	VWR CHROMANORM® gradient grade	2.5 L	20864.320
Water	VWR CHROMANORM® super gradient grade	2.5 L	83650.320
Formic acid	VWR NORMAPUR® analytical reagent	100 mL	20318.180