

Application note # C-13024

Separation of FAMES C6-C24 using the Avantor[®] Hichrom HI-WAX Phase

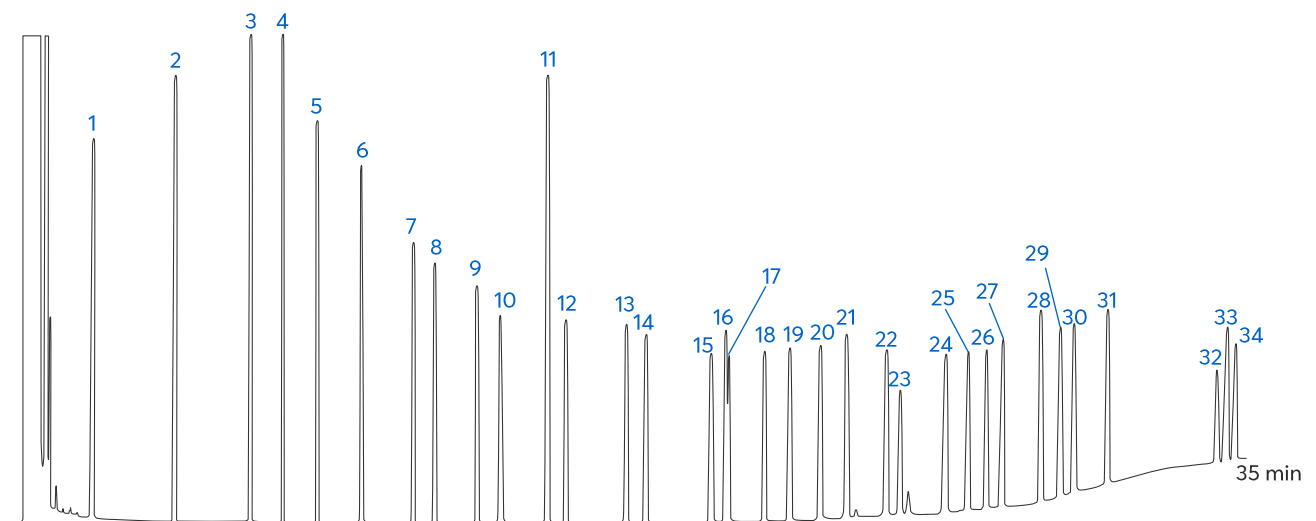


Figure 1: Separation of FAMES C6 - C24 (Fatty Acid Methyl Esters) using the Avantor[®] Hichrom HI-WAX phase.

Method Details

CONDITIONS

Oven Program:	60 °C (2 min), 15 °C/min, 105 °C, 3 °C/min, 195 °C, 5 °C/min, 220 °C (1 min)
Carrier Gas:	Hydrogen, 30 kPa
Injector:	On-Column
Detector:	FID, 250 °C

The HI-WAX is a high polarity polyethylene glycol (PEG) phase for a wide range of applications such as essential oils, flavours and fragrances, FAMES, aromatic compounds and solvents.

PEAK IDENTIFICATION

1. C6:0	13. C17:0	25. C20:3 n-6
2. C8:0	14. C17:1 n-7	26. C20:4 n-6
3. C10:0	15. C18:0	27. C20:3 n-3
4. C11:0	16. C18:1 <i>cis</i> n-9	28. C20:5
5. C12:0	17. C18:1 <i>trans</i> n-9	29. C22:0
6. C13:0	18. C18:2 n-6	30. C22:1 n-9
7. C14:0	19. C18:3 n-6	31. C22:2 n-6
8. C14:1 n-5	20. C18:3 n-3	32. C24:0
9. C15:0	21. C18:4 n-3	33. C22:6 n-3
10. C15:1 n-5	22. C20:0	34. C24:1 n-9
11. C16:0	23. C20:1 n-9	
12. C16:1 n-7	24. C20:2 n-6	

ORDERING TABLE

Product	Details	Dimensions	Part Number
Avantor® Hichrom HI-WAX	GC Column	0.32 mm, 0.25 µm, 30 m	HI09-32-025-30