

Chromatography Solutions

Application note # C-12982

# Separation of FAMES and CLA Isomers using the Avantor<sup>®</sup> Hichrom HI-10 Phase

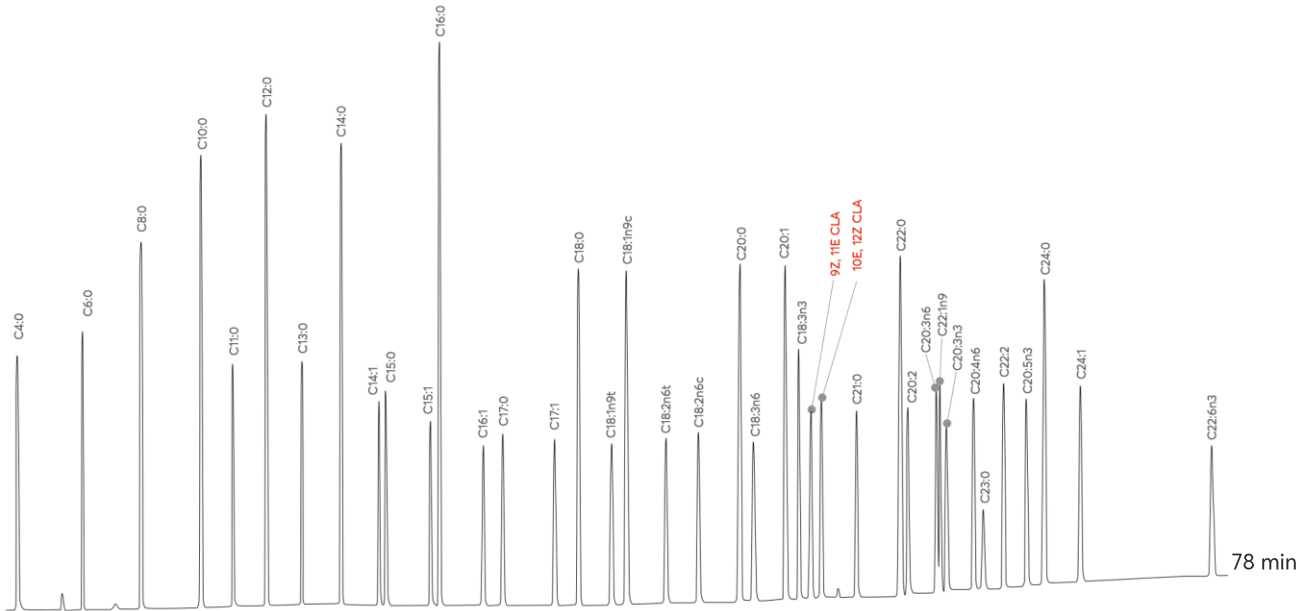


Figure 1: Separation of fatty acid methyl esters (FAMES) and CLA isomers using the Avantor<sup>®</sup> Hichrom HI-10 phase.

# Method Details

## CONDITIONS

Oven Program:	40 °C (4 min), 10 °C/min, 120°C (1 min), 5 °C/min, 180 °C (18 min), 2 °C/min, 200°C (1 min), 2 °C/min, 240 °C
Carrier Gas:	Hydrogen, 1.2 mL/min, constant flow
Injector:	Split, 250 °C, 1:30 split ratio
Detector:	FID, 250 °C

The HI-10 is a high polarity phase with a 100% cyanopropyl polysiloxane composition. It is well suited for the analysis of FAMES, especially for the separation of cis/trans isomers of FAMES.

## ORDERING TABLE

Product	Details	Dimensions	Part Number
Avantor® Hichrom HI-10	GC Column	0.25 mm, 0.20 µm, 100 m	HI26-25-020-100