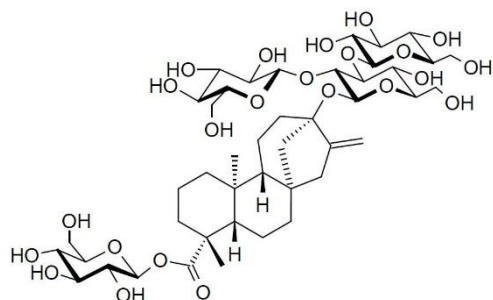
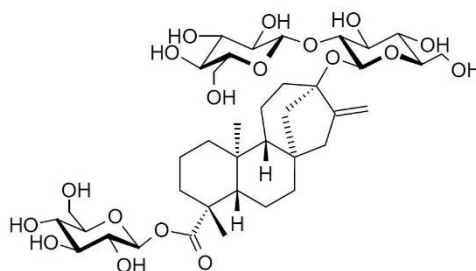


Conditions

Column:	ACE Excel 5 SuperC18
Dimensions:	250 x 4.6 mm
Part Number:	EXL-1211-2546U
Mobile phase:	10 mM sodium dihydrogen phosphate pH 2.6:MeCN (68:32 v/v)
Injection:	2 μ L
Temperature:	Ambient
Detection:	UV, 210 nm
Monograph method:	National Food Safety Standard GB 8270-2014



1. Rebaudioside A



2. Stevioside

