

Formoterol from Human Plasma by LC-MS/MS

ACE[®]
Ultra-inert
UHPLC & HPLC Columns

Application #AN3100

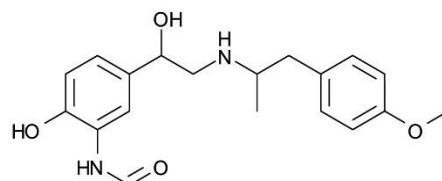
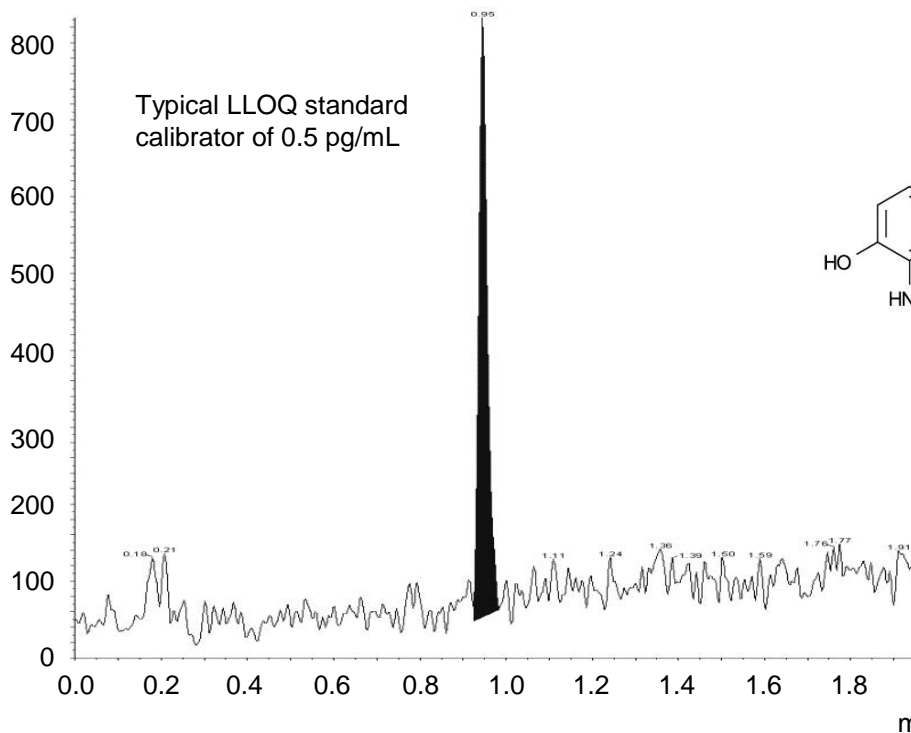
Conditions

Column: ACE Excel 2 C18-AR
Dimensions: 50 x 2.1 mm
Part Number: EXL-109-0502U
Mobile Phase: A: 0.02% formic acid in H₂O
B: 0.02% formic acid in H₂O/MeOH (2:98 v/v)

Time (mins)	%B
0.00	10
0.20	10
2.00	40
2.01	100
3.50	100
3.51	10
4.00	10

Flow Rate: 0.75 mL/min
Temperature: 60 °C
Detection: AB SCIEX QTRAP 5500 LC-MS/MS system
Sample: Extracted by mixed mode cation exchange SPE

Intensity, cps



1. Formoterol
(*m/z* 345 → 149)

Reproduced with permission of Bioanalytical Systems, Inc
© 2015 ACT Ltd. All rights reserved. All products are available worldwide.



For more information contact your local ACE distributor or visit
www.ace-hplc.com or email: info@ace-hplc.com