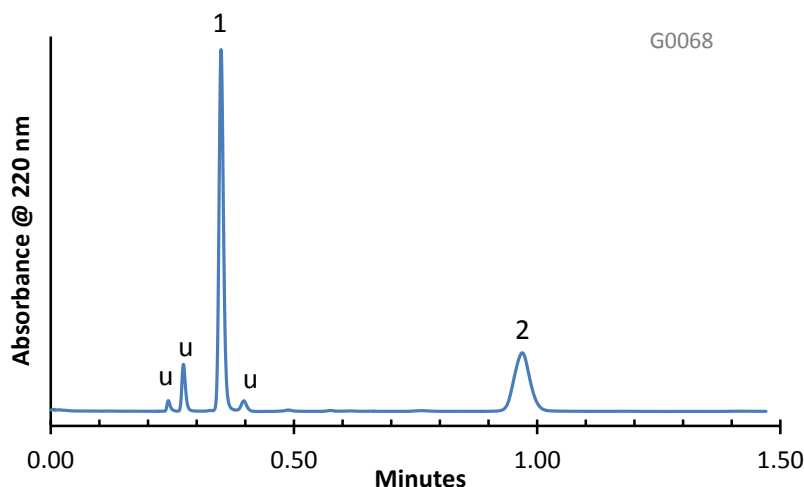


Separation of Galanthamine and Quetiapine on HALO PFP (pentafluorophenyl) Phase



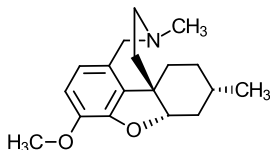
PEAK IDENTITIES:

1. Galanthamine
 2. Quetiapine
- u=unknown

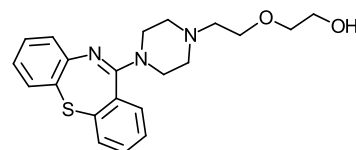
TEST CONDITIONS:

Column: 4.6 x 50 mm, HALO PFP
Part Number: 92814-409
Mobile Phase: 58/42: A/B
A= 0.02 M Potassium phosphate, pH=3
B= Acetonitrile
Flow Rate: 1.8 mL/min.
Pressure: 155 Bar
Temperature: 40°C
Detection: UV 220 nm, VWD
Injection Volume: 0.5 µL
Sample Solvent: Methanol
Response Time: 0.02 sec.
Flow Cell: 2.5 µL semi-micro
LC System: Shimadzu Prominence UFLC XR
ECV: ~14 µL

STRUCTURES:



Galanthamine



Quetiapine

These psychiatric drugs can be rapidly separated on a HALO PFP column in just one minute.