

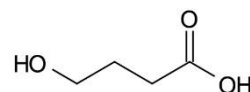
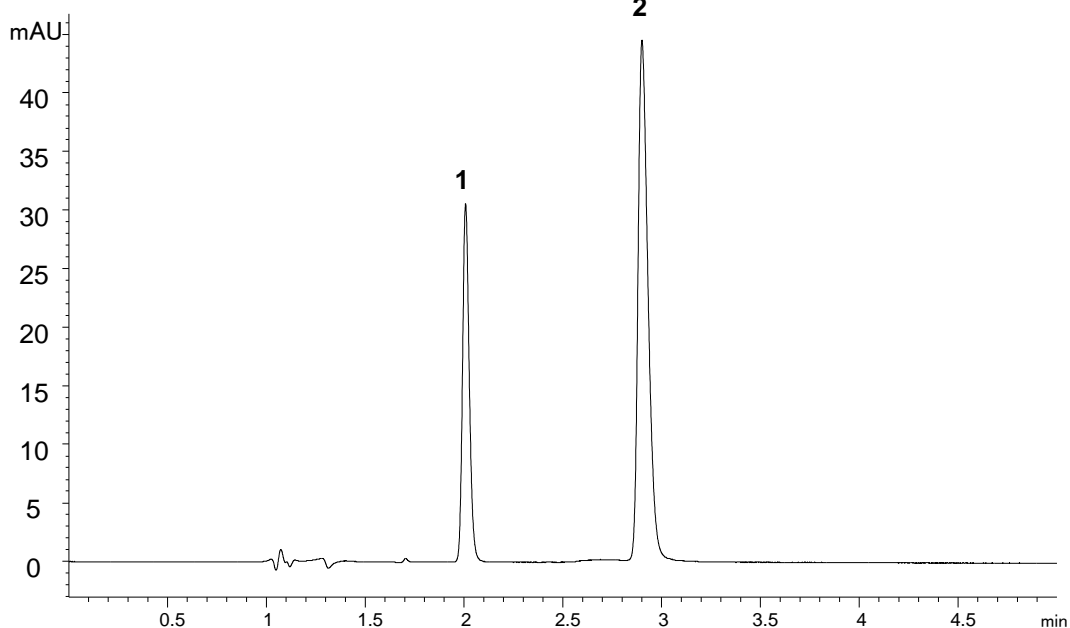
Gamma Hydroxybutyric Acid (GHB) and Gamma Butyrolactone (GBL) Separation

ACE[®]
Ultra-inert
UHPLC & HPLC Columns

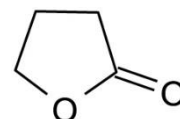
Application #AN1500

Conditions

Column: ACE Excel 2 C18-AR
Dimensions: 100 x 3.0 mm
Part Number: EXL-109-1003U
Mobile Phase: 20 mM KH₂PO₄ pH 2.5 H₂O/MeCN (98:2 v/v)
Flow Rate: 0.43 mL/min
Injection: 2 µL
Temperature: 30 °C
Detection: UV, 215 nm



1. GHB



2. GBL