

Ginsenosides from Chinese Medicine by UHPLC-MS/MS

ACE[®]
Ultra-inert
UHPLC & HPLC Columns

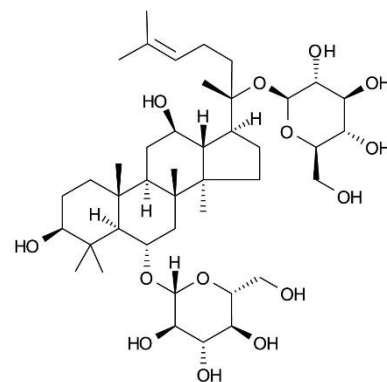
Application #AN3540

Conditions

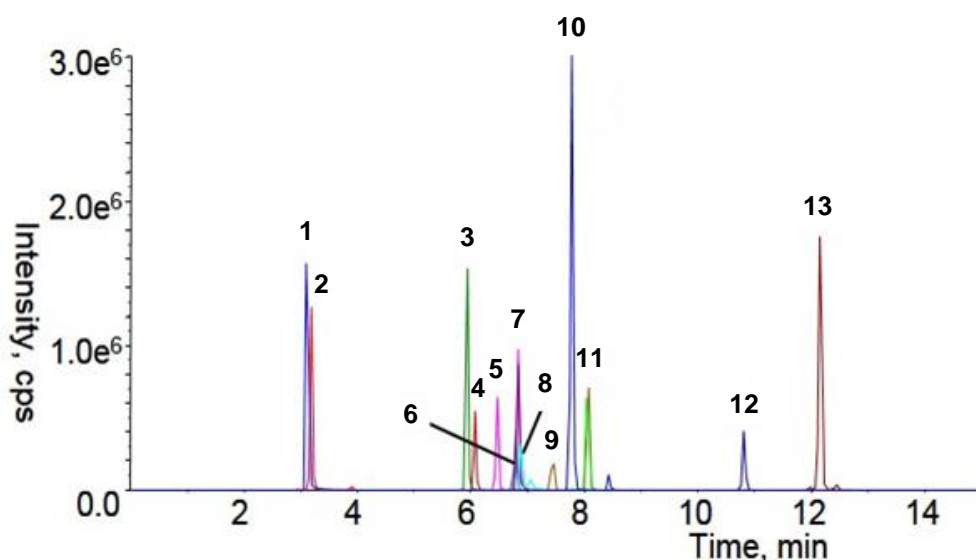
Column: ACE UltraCore 2.5 SuperC18
Dimensions: 150 x 3.0 mm
Part Number: CORE-25A-1503U
Mobile Phase: A: 0.1% formic acid in H₂O
B: 0.1% formic acid in MeCN

Time (mins)	%B
0	25
13	60
15	95
17	95

Flow Rate: 0.4 mL/min
Injection: 2 µL
Temperature: 45 °C
Detection: AB SCIEX 5500 Qtrap MS
ESI in negative ion mode
Source temperature: 450 °C
Sprayer voltage: -4500 V
Stepwise MRM mode for [M + HCOO]⁻ > [M - H]⁻ ion transitions
Mass range 501 – 1250 u (step size 2 u)



Ginsenoside Rg1



1. Ginsenoside Re (m/z 991 → 945)
2. Ginsenoside Rg1 (m/z 845 → 799)
3. Ginsenoside Rf (m/z 845 → 799)
4. Ginsenoside Rb1 (m/z 1153 → 1107)
5. Ginsenoside Rc (m/z 1123 → 1077)
6. Ginsenoside Ro (m/z 1001 → 955)
7. Ginsenoside Rb2 (m/z 1123 → 1077)
8. Ginsenoside Rg2 (m/z 829 → 783)
9. Ginsenoside Rh1 (m/z 683 → 637)
10. Ginsenoside Rd (m/z 991 → 945)
11. Ginsenoside F1 (m/z 683 → 637)
12. Ginsenoside F2 (m/z 829 → 783)
13. Ginsenoside Rg3 (m/z 829 → 783)

Reproduced with permission of Beijing University of Chinese Medicine, Beijing, China
© 2015 ACT Ltd. All rights reserved. All products are available worldwide.



For more information contact your local ACE distributor or visit
www.ace-hplc.com or email: info@ace-hplc.com