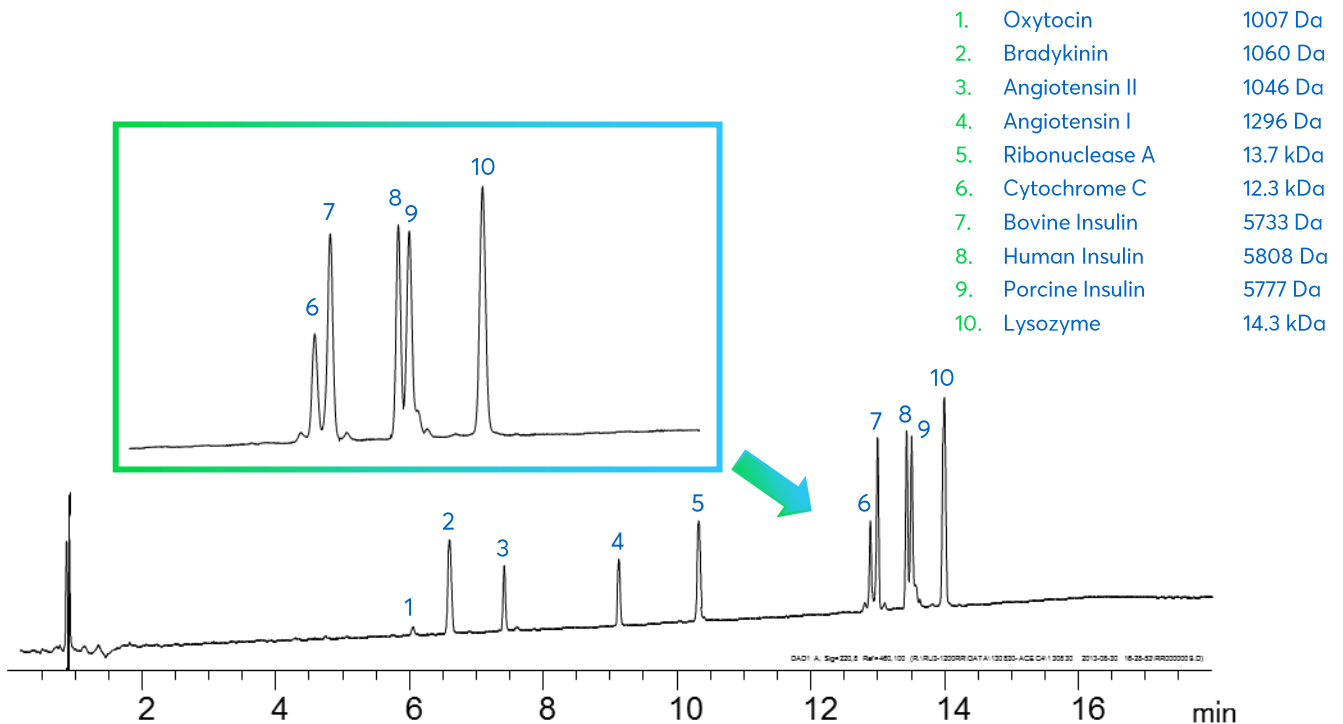


Gradient Separation of Peptides and Proteins



Method Details

CONDITIONS

Columns:	Avantor® ACE® 3 C4-300
Particle Size:	3 µm
Dimensions:	150 x 2.1 mm
Mobile Phases:	A: 0.1% trifluoroacetic acid in H ₂ O B: 0.1% trifluoroacetic acid in MeCN:H ₂ O (80:20 v/v)

Gradient:

Time (mins)	%B
0	10
15	50
17.5	50
18	10

Flow Rate:	0.5 mL/min
Injection:	3 µL
Temperature:	60 °C
Detection:	UV, 220 nm

ORDERING TABLE

Product	Details	Size	Part number
Avantor® ACE® 3 C4-300	HPLC Column	150 x 2.1 mm	ACE-213-1502
Acetonitrile	VWR CHROMANORM® super gradient grade	2.5 L	83639.320
Water	VWR CHROMANORM® super gradient grade	2.5 L	83650.320
Trifluoroacetic acid	VWR CHROMANORM® for LC/MS	10 x 1 mL	85049.001