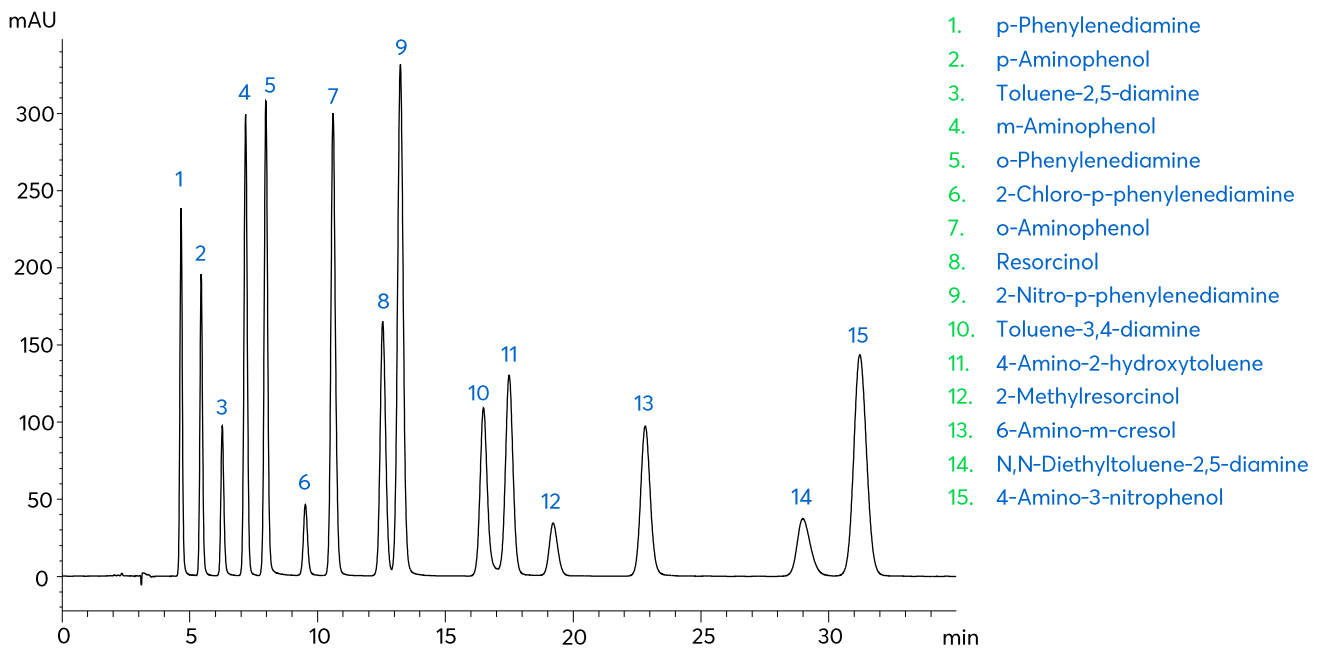


# Hair Dye Restricted Components (II)



# Method Details

## CONDITIONS

Column:	Avantor® ACE® Excel® 5 C18-Amide
Particle Size:	5 µm
Dimensions:	250 x 4.6 mm
Mobile Phase:	1.8 g disodium phosphate dodecahydrate + 2.8 g potassium dihydrogen phosphate + 1.0 g sodium 1-heptanesulfonate (all diluted to 1.0 L with water):MeCN (60:40 v/v)
Flow Rate:	1 mL/min
Temperature:	25 °C
Detection:	UV, 280 nm

## ORDERING TABLE

Product	Details	Size	Part Number
Avantor® ACE® Excel® 5 C18-Amide	HPLC Column	250 x 4.6 mm	EXL-1212-2546U
Acetonitrile	VWR CHROMANORM® super gradient grade	2.5 L	83639.320
Water	VWR CHROMANORM® super gradient grade	2.5 L	83650.320
Potassium dihydrogen phosphate	VWR CHROMANORM® for HPLC	500 g	153184U
Disodium phosphate dodecahydrate	VWR AnalaR NORMAPUR® analytical reagent	500 g	28028.260
Sodium 1-heptanesulfonate	VWR HiPerSolv CHROMANORM® for HPLC	100 g	152783K