

# Separation of HCH Pesticides using the Avantor® Hichrom HI-DEX B-SE Phase

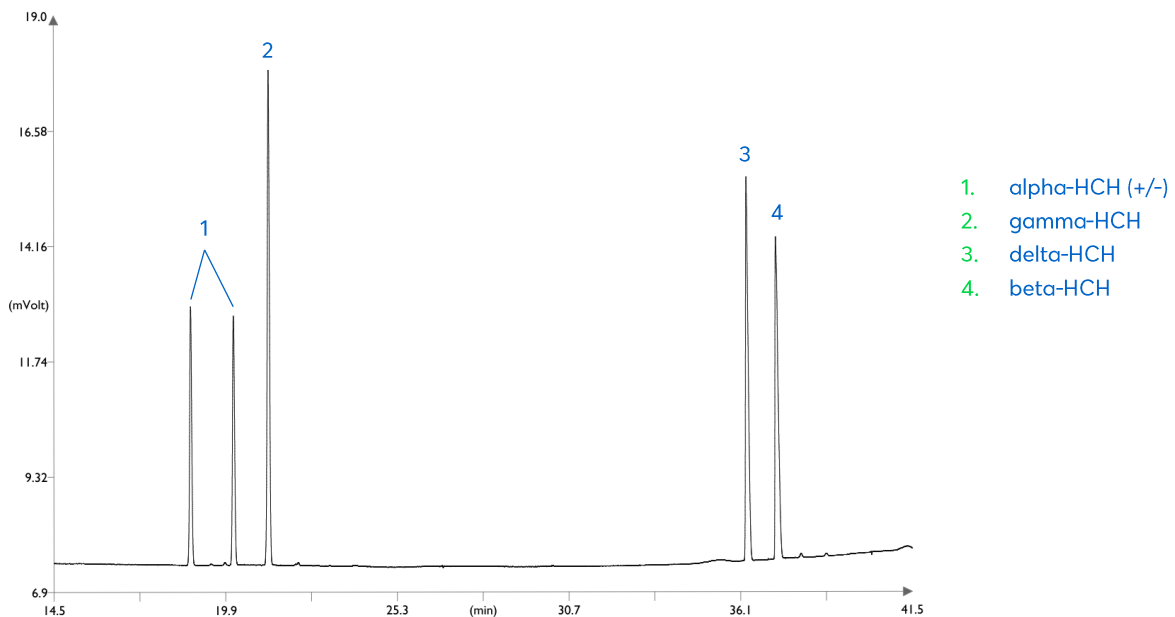


Figure 1: Separation of Hexachlorocyclohexane (HCH) pesticides using the Avantor® Hichrom HI-DEX B-SE phase.

# Method Details

## CONDITIONS

|                  |  |
|------------------|--|
| Oven Program:    | 120 °C, 2 °C/min, 203 °C                                 |
| Carrier Gas:     | Hydrogen, 120 kPa  |
| Injection:       | Split 250°C, 20 mL/min split flow, 1 µL injection volume |
| Detector:        | FID, 250 °C  |
| Sample Dilution: | 1 mg/mL each compound                                    |

The HI-DEX B-SE is a proprietary cyclodextrin phase with a unique selectivity for the separation of enantiomers. Useful in the analysis of chiral compounds in fragrances, pesticides and pharmaceuticals.

## ORDERING TABLE

| Product                      | Details   | Dimensions             | Part Number    |
|------------------------------|-----------|------------------------|----------------|
| Avantor® Hichrom HI-DEX B-SE | GC Column | 0.25 mm, 0.25 µm, 30 m | HI72-25-025-30 |