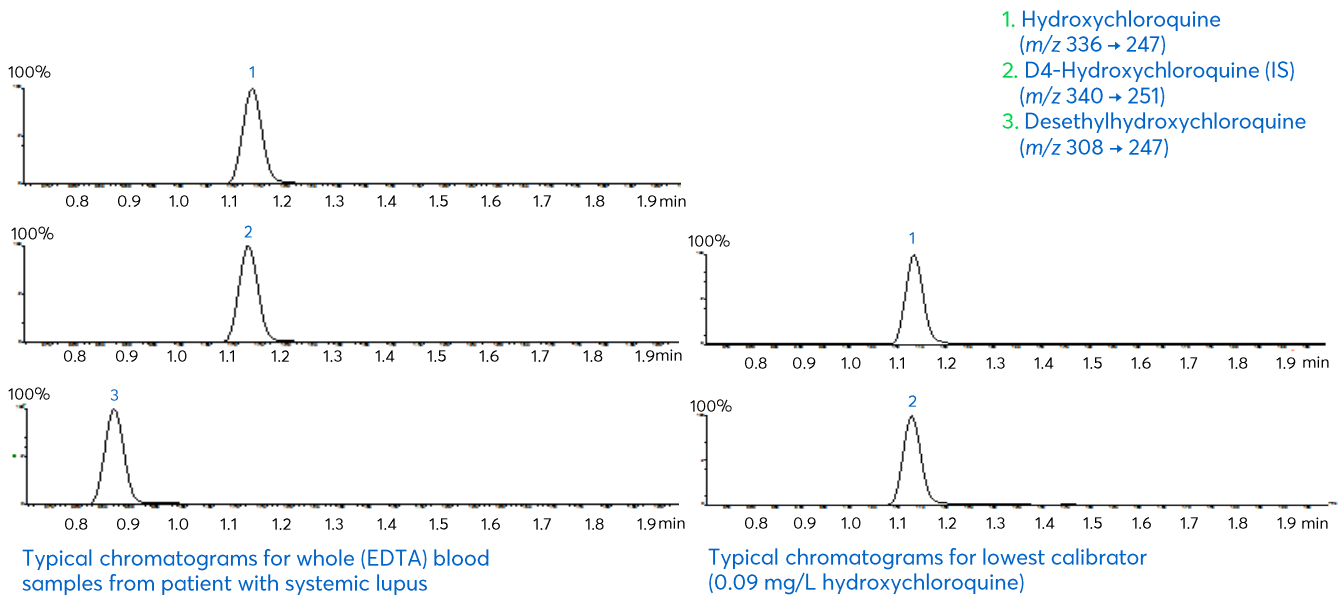


# Application note #1120

## Hydroxychloroquine in Whole (EDTA) Blood by LC-MS/MS



# Method Details

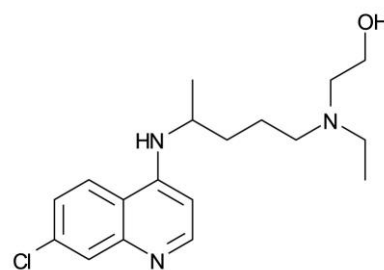
## CONDITIONS

Column:	Avantor® ACE® Excel 2 SuperC18
Particle Size:	2 µm
Dimensions:	50 x 2.1 mm
Mobile Phase:	A: 0.5% Ammonium hydroxide pH 10 in H <sub>2</sub> O B: 0.5% Ammonium hydroxide in MeCN

### Gradient:

Time (mins)	% B
0.00	30
1.50	100
2.50	100
2.51	30

Flow Rate:	0.4 mL/min
Injection:	5 µL
Temperature:	40 °C
Detection:	MS/MS detection with Waters TQD ESI +ve ion mode



Hydroxychloroquine

## ORDERING TABLE

Product	Details	Size	Part Number
Avantor® ACE® Excel 2 Super C18	UHPLC Column	50 x 2.1 mm	EXL-1011-0502U

Reproduced with permission of Leslie Brent Laboratory, Hammersmith Hospital, London, UK.