

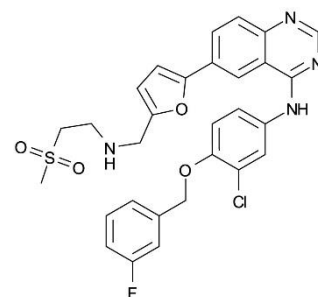
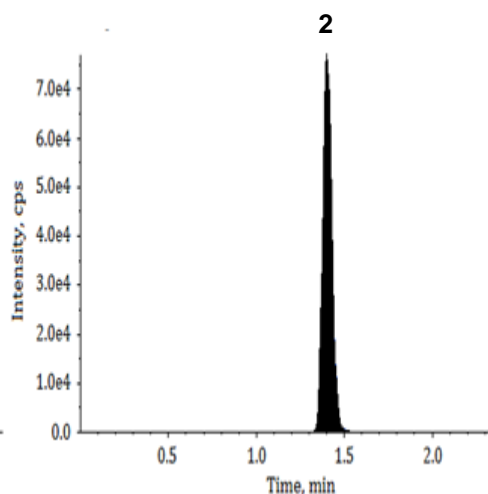
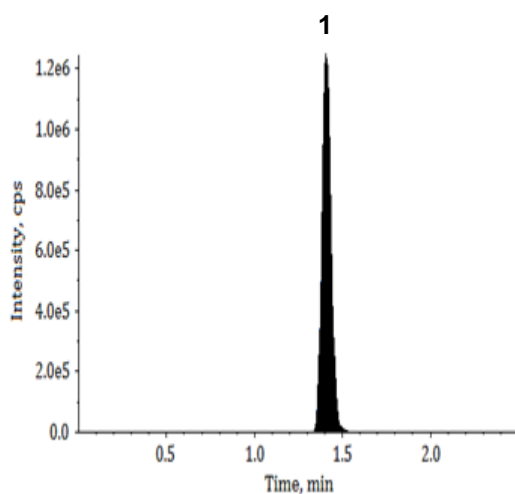
Lapatinib Anticancer Drug in Human Plasma by LC-MS/MS

Application #AN3360

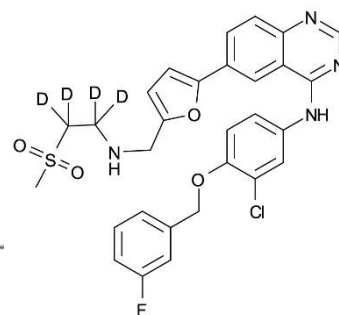
Conditions

Column:	ACE 5 C18
Dimensions:	100 x 4.6 mm
Part Number:	ACE-121-1046
Mobile Phase:	10 mM ammonium formate pH 3.5/MeCN (10:90 v/v)
Flow Rate:	1 mL/min
Injection:	0.5 μ L
Temperature:	40 $^{\circ}$ C
Detection:	API 4000 triple quad MS Positive ion mode ESI Ion spray voltage: 5500 V Temperature: 400 $^{\circ}$ C
Sample:	Extracted from 100 μ L plasma using liquid-liquid extraction

LLOQ	2.5 ng/mL
LOD	1.0 ng/mL
Method Linearity	2.5 – 2500 ng/mL



1. Lapatinib
(m/z 581.1 \rightarrow 365.2)
Concentration 1000 ng/mL



2. Lapatinib-d4 (IS)
(m/z 585.1 \rightarrow 365.0)
Concentration 100 ng/mL