

# Lidocaine in Saliva by LC-MS/MS

**ACE**<sup>®</sup>  
Ultra-inert  
UHPLC & HPLC Columns

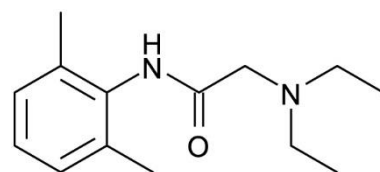
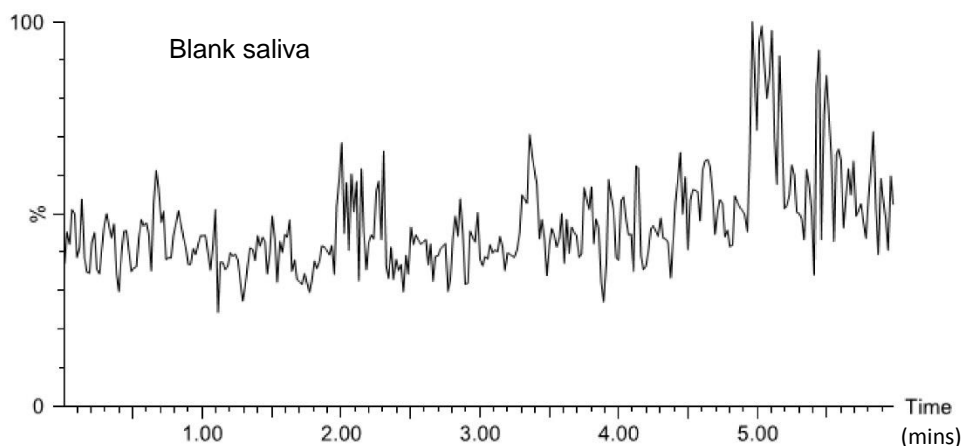
Application #AN2570

## Conditions

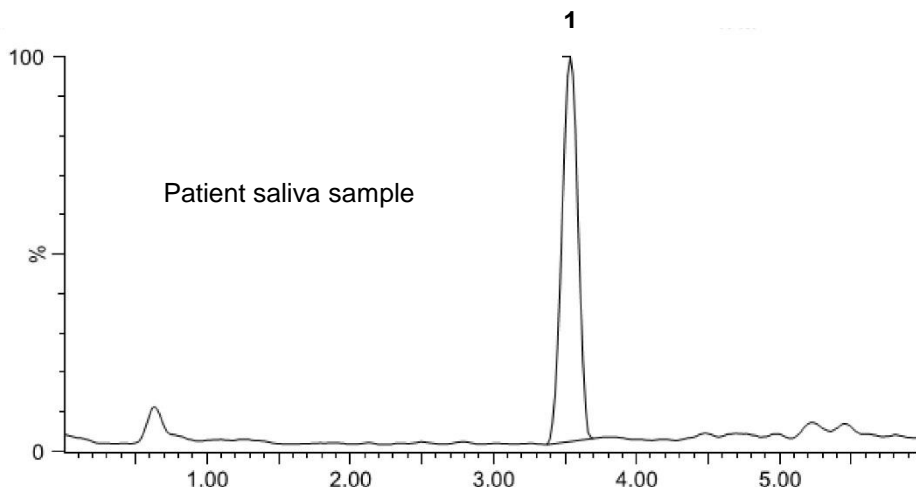
Column: ACE 3 C18  
Dimensions: 100 x 3.0 mm  
Part Number: ACE-111-1003  
Mobile Phase: A: 0.1% formic acid in MeCN/H<sub>2</sub>O (20:80 v/v)  
B: 0.1% formic acid in MeCN/H<sub>2</sub>O (80:20 v/v)

Time (mins)	%B
0.0	20
1.0	20
3.0	80
4.5	80

Flow Rate: 0.3 mL/min  
Injection: 10 µL  
Detection: Quattro-Micro triple quad MS  
Positive ion mode ESI



1. Lidocaine  
(*m/z* 235 → 86)



Saliva samples taken  
after "Emla 5%"  
application to skin

Reproduced with permission of Department of Analytical Chemistry, Stockholm University, Sweden  
© 2015 ACT Ltd. All rights reserved. All products are available worldwide.

  
**ACE**<sup>®</sup>  
UHPLC & HPLC  
Columns

For more information contact your local ACE distributor or visit  
[www.ace-hplc.com](http://www.ace-hplc.com) or email: [info@ace-hplc.com](mailto:info@ace-hplc.com)