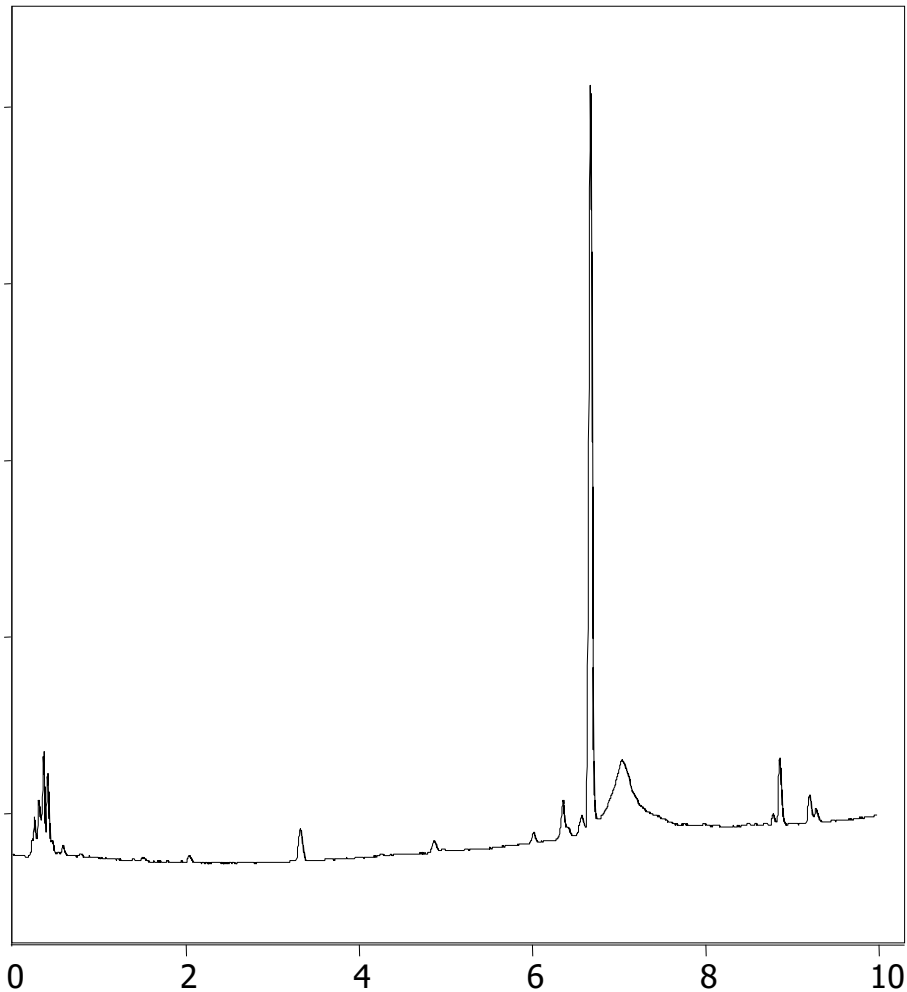


# Linalol Oil



Column : **2.6 $\mu$  SpeedCore C18**  
**50x2.1mm**  
p/n : **SP18-020326**

Mobile Phase: **A: Water + 0.1% formic**  
**B: ACN + 0.1% formic acid**

Gradient: **60-100% B in 5 mins, hold until 10**  
**mins**

Flow : **1.0ml/min**  
Temp : **25°C**

**1. Linalol Oil**