

Liquorice Extracts Fingerprint

ACE[®]
Ultra-inert
UHPLC & HPLC Columns

Application #AN2090

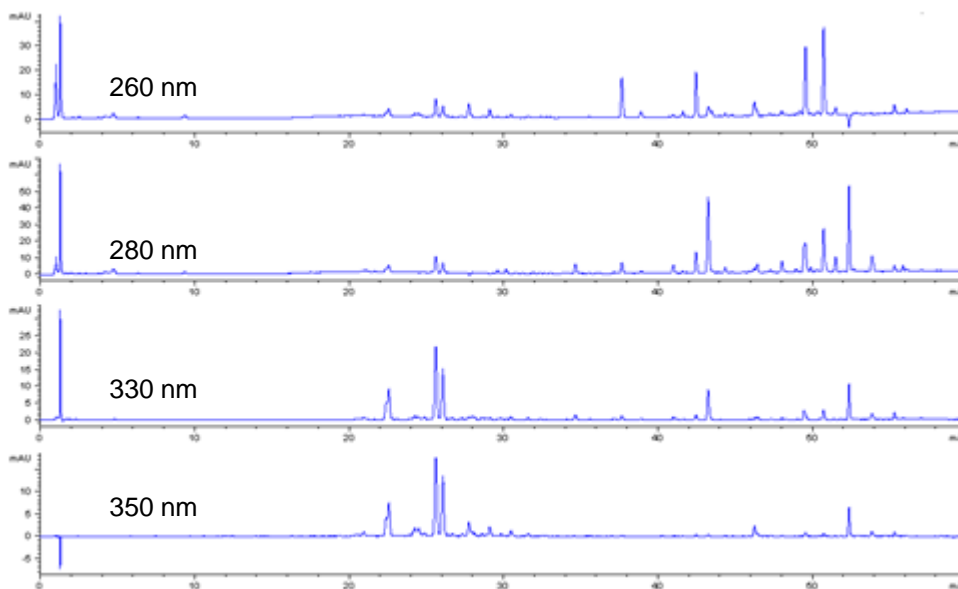
Conditions

Column: ACE 3 C18-PFP
Dimensions: 150 x 2.1 mm
Part Number: ACE-1110-1502
Mobile Phase: A: Ammonium acetate in H₂O pH 4
B: MeOH

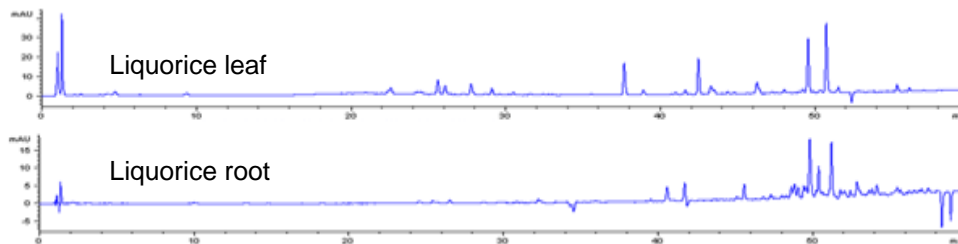
Time (mins)	%B
0	10
1	10
11	15
55	90
60	100

Flow Rate: 0.4 mL/min
Injection: 2 μ L
Temperature: 40 °C
Detection: UV, 260, 280, 330 and 350 nm
Sample: Plant material ground to a fine powder in pestle and mortar. Powdered material extracted into methanol by ultrasonification for 30 minutes, followed by centrifugal filtration.

Methanolic liquorice
leaf extract at different
wavelengths



Comparison of
methanolic extracts at
260 nm



Reproduced with permission of Unilever, Colworth Science Park, UK
© 2015 ACT Ltd. All rights reserved. All products are available worldwide.



For more information contact your local ACE distributor or visit
www.ace-hplc.com or email: info@ace-hplc.com