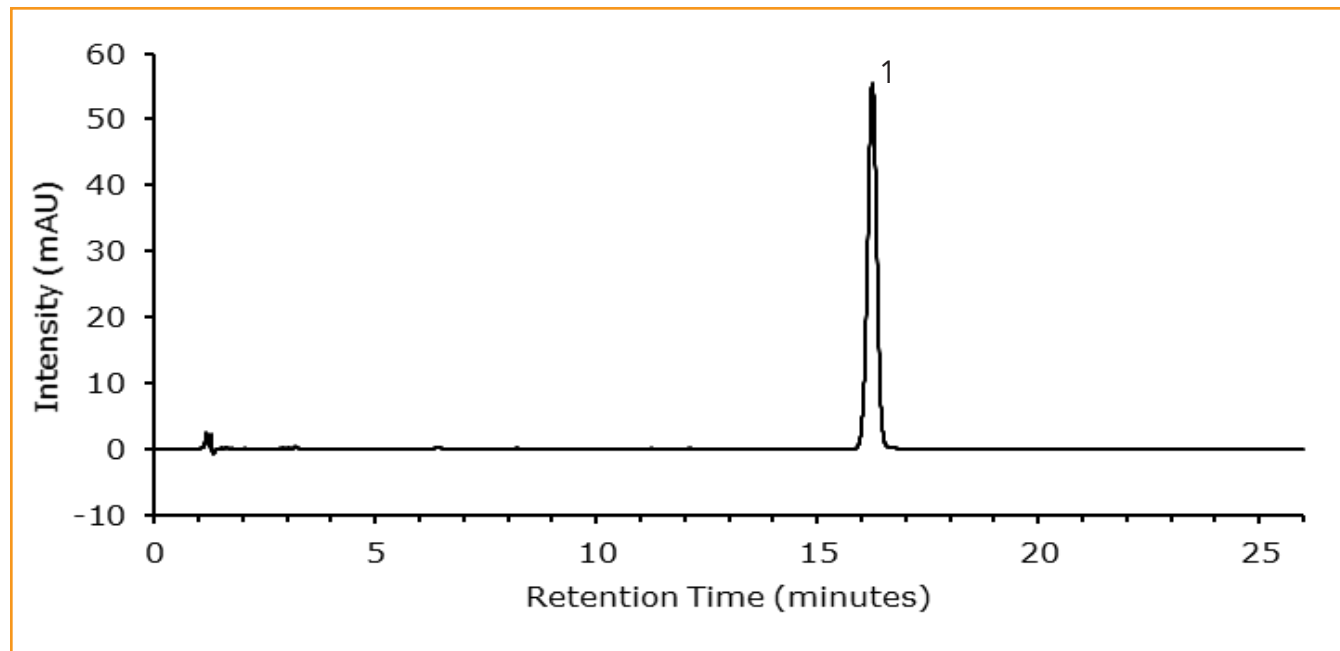




Lopinavir Assay Method (EP 10.2)

266-L



TEST CONDITIONS:

Column: HALO 90 Å C18, 2.7 µm, 4.6 x 150 mm

Part Number: 92814-702

Mobile Phase A: Phosphate buffer pH: 6.0
0.9g dipotassium hydrogen phosphate and 2.7g
potassium dihydrogen phosphate in 1000 mL water

Mobile Phase B: Acetonitrile

Isocratic: 45% B

Flow Rate: 1.0 mL/min

Initial Back Pressure: 153 bar

Temperature: 50 °C

Detection: UV: 215 nm

Injection Volume: 12 µL

Sample Solvent: 50/50 Acetonitrile/ Water

PEAK IDENTITIES

1. Lopinavir CRS

A European Pharmacopeia Method (EP 10.2) for Lopinavir has been modified to a shorter, faster alternative column saving time and mobile phase. Lopinavir is used to treat HIV infection and may slow the disease with a combination of other drugs.

