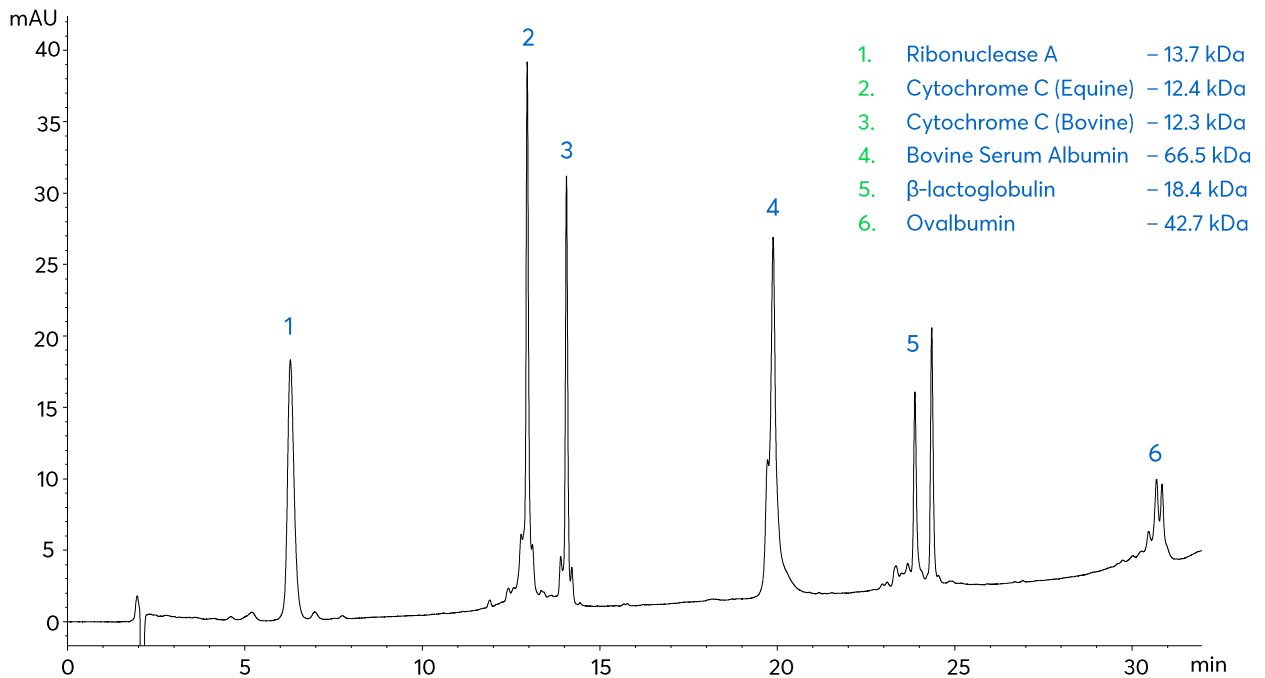


# Medium Molecular Weight Proteins



# Method Details

## CONDITIONS

Column: Avantor® ACE® 3 C8-300  
 Dimensions: 150 x 2.1 mm  
 Mobile Phase: A: 0.1% trifluoroacetic acid in H<sub>2</sub>O  
 B: 0.1% trifluoroacetic acid in MeCN

Gradient:

Time (mins)	%B
0	25
25	50
28	80
30	80
31	25
45	25

Flow Rate: 0.21 mL/min  
 Injection: 5 µL  
 Temperature: 60 °C  
 Detection: UV, 220 nm

## ORDERING TABLE

Product	Details	Size	Part Number
Avantor® ACE® 3 C8-300	HPLC Column	150 x 2.1 mm	ACE-212-1502
Acetonitrile	VWR CHROMANORM® gradient grade	2.5 L	83639.320
Water	VWR CHROMANORM® gradient grade	2.5 L	83650.320
Trifluoroacetic acid	VWR HiPerSolv CHROMANORM® for LC-MS	10 x 1 mL	85049.001