

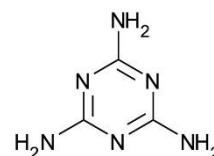
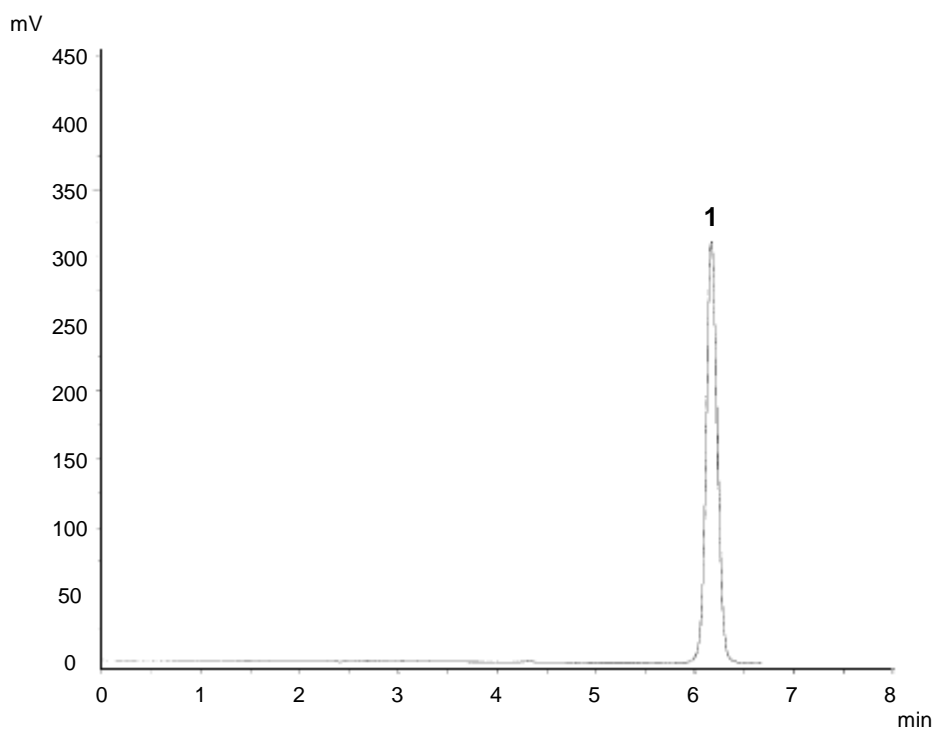
Melamine using Ion-Pairing Reagent

ACE[®]
Ultra-inert
UHPLC & HPLC Columns

Application #AN2510

Conditions

Column:	ACE 5 C8
Dimensions:	150 x 4.6 mm
Part Number:	ACE-122-1546
Mobile Phase:	5 mM heptafluorobutyric acid:MeCN (95:5 v/v)
Flow Rate:	1 mL/min
Injection:	5 µL
Temperature:	Ambient
Detection:	UV, 240 nm



1. Melamine