

Metabolomic Biomarkers in Ethylmalonic Encephalopathy

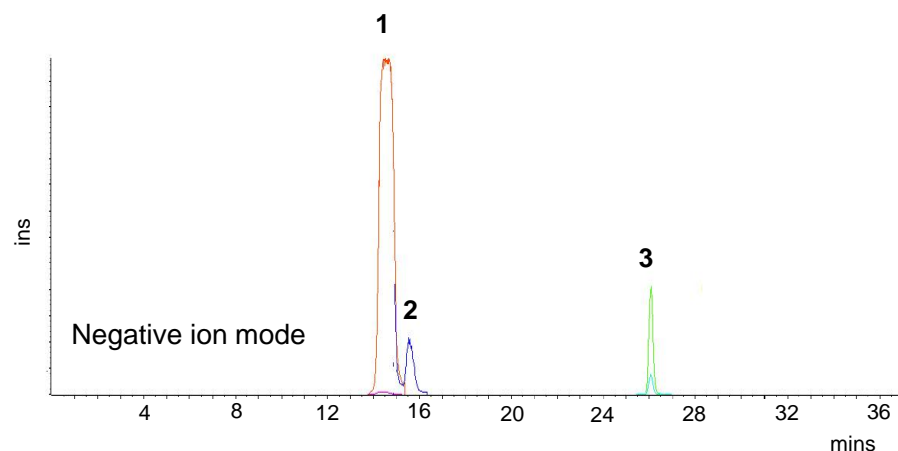
ACE[®]
Ultra-inert
UHPLC & HPLC Columns

Application #AN4130

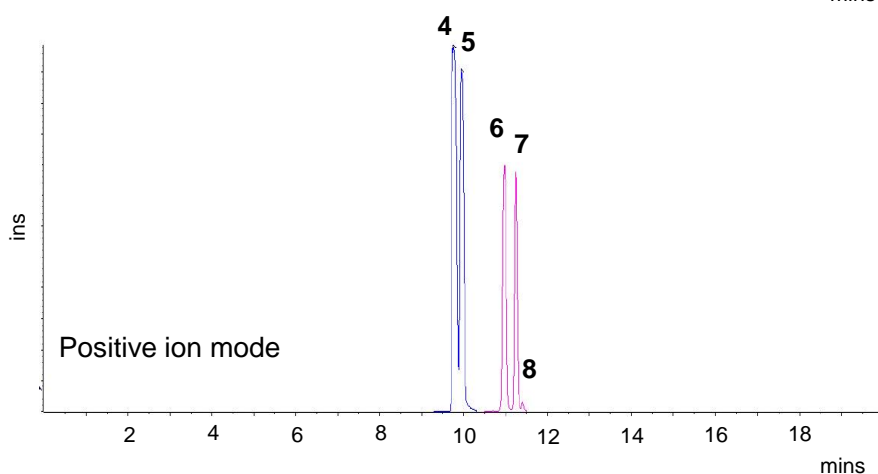
Conditions

Column: ACE 3 C18-PFP
Dimensions: 150 x 2.1 mm
Part Number: ACE-1110-1502
Mobile Phase: A: 0.1% formic acid in H₂O
B: 0.1% formic acid in MeCN
Detection: Sciex API 4000 triple quad MS
ESI in negative ion mode
Sample: Urine sample from patient with ethylmalonic encephalopathy is filtered and extracted with ice-cold methanol, evaporated to dryness and reconstituted in 0.1% formic acid in water

Please contact info@ace-hplc.com for additional information on the chromatographic conditions used for this analysis.



1. Ethylmalonic acid (m/z 131 \rightarrow 87)
2. Methylsuccinic acid (m/z 131 \rightarrow 87)
3. Adipic acid (m/z 145 \rightarrow 83)
4. Isobutyrylcarnitine (m/z 232 \rightarrow 85)
5. Butyrylcarnitine (m/z 232 \rightarrow 85)
6. 2-Methylbutyrylcarnitine (m/z 246 \rightarrow 85)
7. Isovalerylcarnitine (m/z 246 \rightarrow 85)
8. Valerylcarnitine (m/z 246 \rightarrow 85)



Reproduced with permission of UCSD Biochemical Genetics, Department of Pediatrics, University of California San Diego, California, USA

© 2015 ACT Ltd. All rights reserved. All products are available worldwide.

For more information contact your local ACE distributor or visit
www.ace-hplc.com or email: info@ace-hplc.com



ACE[®]
UHPLC & HPLC
Columns