

Method Translation of Gradient Separation of Peptides from HPLC to UHPLC

ACE[®]
Ultra-inert
UHPLC & HPLC Columns

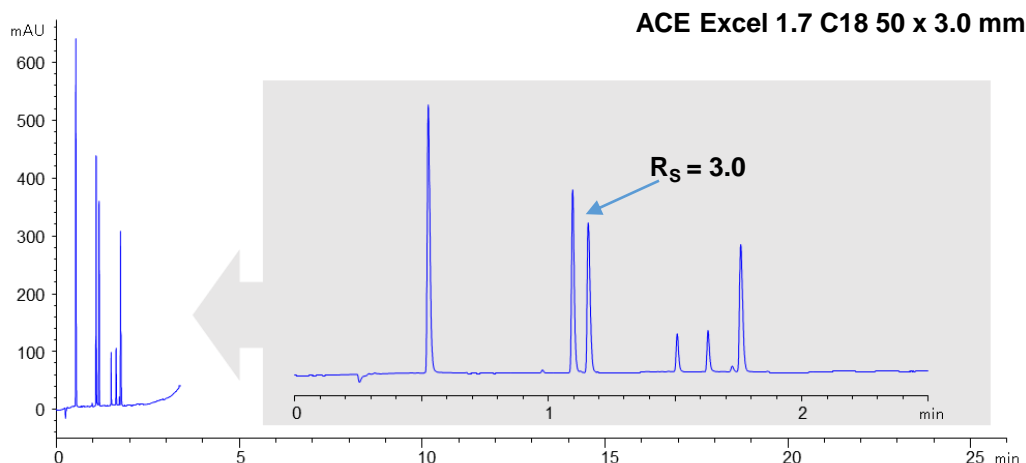
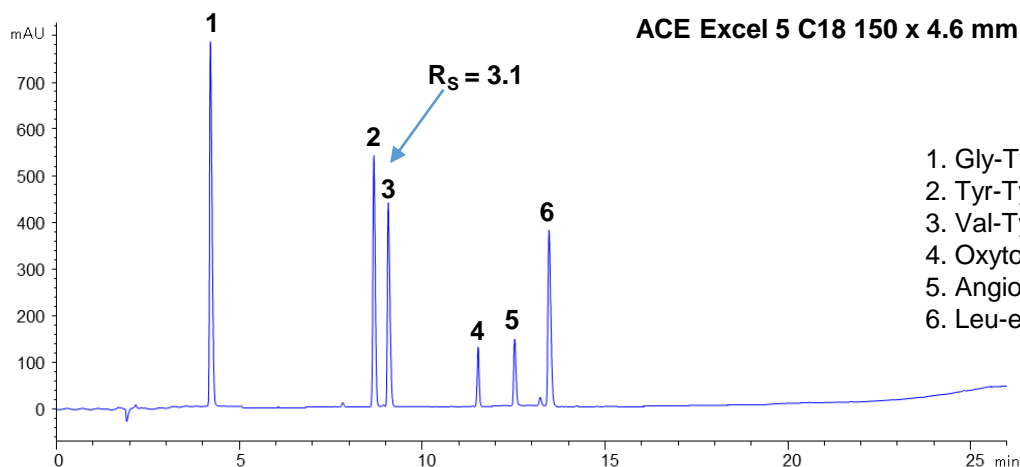
Application #AN6400

Conditions

Column: (I) ACE Excel 5 C18; (II) ACE Excel 1.7 C18
 Dimensions: (I) 150 x 4.6 mm; (II) 50 x 3.0 mm
 Part Number: (I) EXL-121-1546U; (II) EXL-171-0503U
 Mobile Phase: A: 0.05% TFA in H₂O
 B: 0.05% TFA in MeCN

150 x 4.6 mm	50 x 3.0 mm	%B
Time (mins)	Time (mins)	
0	0.00	5
17	2.41	40
23	3.26	90
25	3.54	90
26	3.69	5

Flow Rate: (I) 1.00 mL/min; (II) 1.00 mL/min
 Injection: (I) 10 µL; (II) 1.4 µL
 Temperature: 60 °C
 Detection: UV, 220 nm
 Instrument: (I) Agilent 1100; (II) Chromaster UltraRs



© 2018 ACT Ltd. All rights reserved. All products are available worldwide.

For more information contact your local ACE distributor or visit
www.ace-hplc.com or email: info@ace-hplc.com

