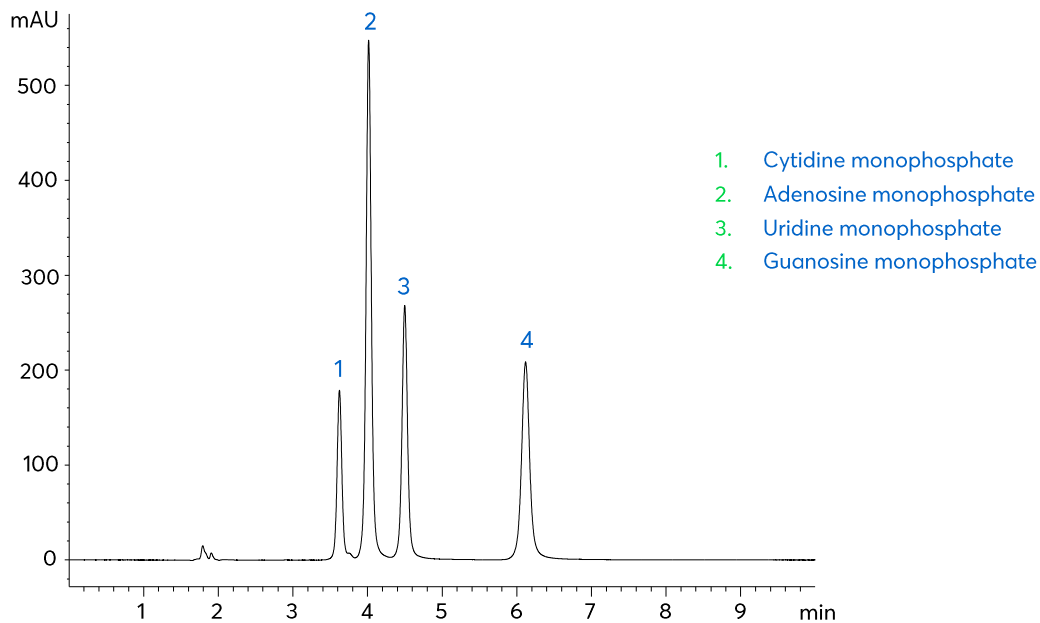


## Application note #4450

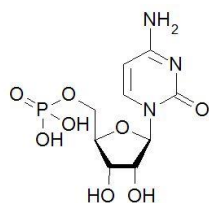
# Monophosphate Nucleotides



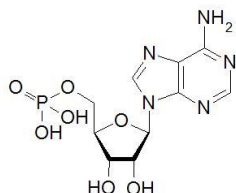
# Method Details

## CONDITIONS

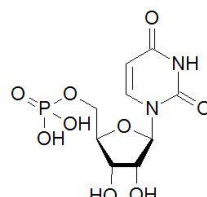
Column:	Avantor® ACE® Excel 3 NH <sub>2</sub>
Particle Size:	3 μm
Dimensions:	150 x 4.6 mm
Mobile Phase:	10 mM potassium dihydrogen phosphate pH 2.0 in MeCN/H <sub>2</sub> O (50:50 v/v)
Flow Rate:	1 mL/min
Injection:	10 μL
Temperature:	40 °C
Detection:	UV, 260 nm



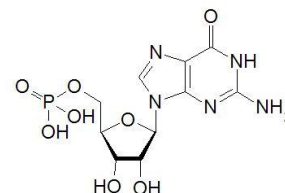
Cytidine monophosphate



Adenosine monophosphate



Uridine monophosphate



Guanosine monophosphate

## ORDERING TABLE

Product	Details	Size	Part Number
Avantor® ACE® Excel 3 NH <sub>2</sub>	HPLC Column	150 x 4.6 mm	EXL-1114-1546U
Acetonitrile	VWR CHROMANORM® super gradient grade	2.5 L	83639.320
Water	VWR CHROMANORM® super gradient grade	2.5 L	83650.320
Potassium dihydrogen phosphate	VWR CHROMANORM® for HPLC	500 g	153184U