

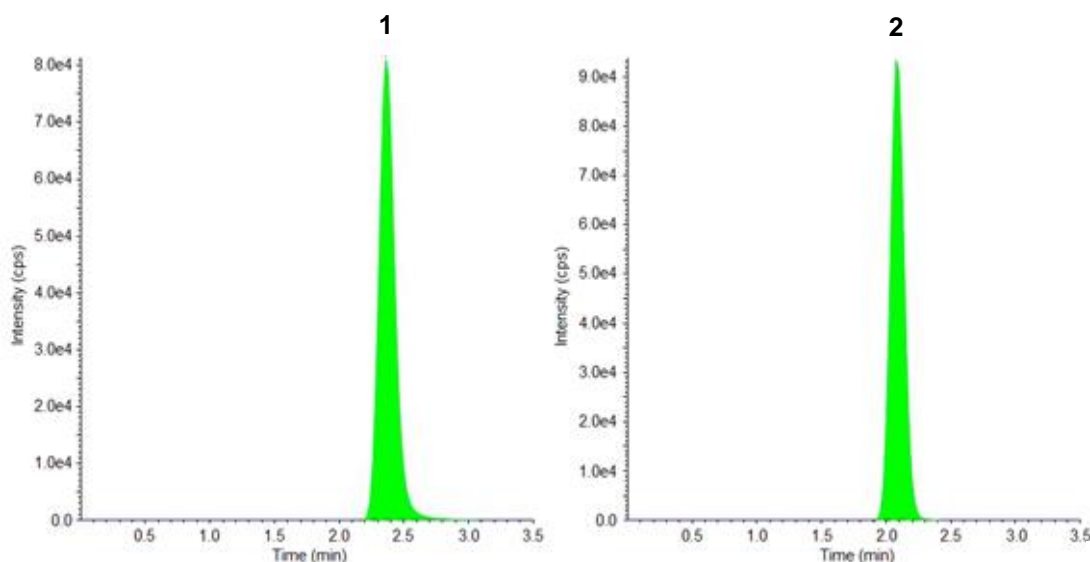
Olanzapine in Human Plasma by LC-MS/MS

ACE[®]
Ultra-inert
UHPLC & HPLC Columns

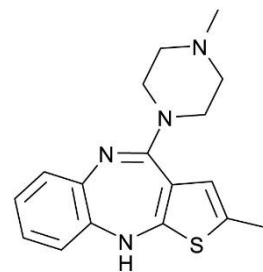
Application #AN2520

Conditions

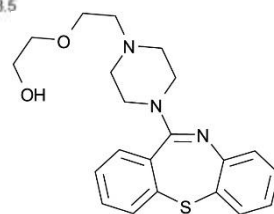
Column: ACE 5 C18-300
Dimensions: 100 x 4.6 mm
Part Number: ACE-221-1046
Mobile Phase: MeCN/0.01% ammonia in 2 mM ammonium formate pH 6.6 (85:15 v/v)
Flow Rate: 0.9 mL/min
Injection: 5 µL
Detection: API 4000 triple quad MS
Turbo Ion Spray in positive mode
Ion Spray voltage: 5500 V
Temperature: 550 °C



MRM chromatograms of plasma sample after administration of 5 mg dose of olanzapine



1. Olanzapine
 m/z 313.2 \rightarrow 256.2)



2. Quetiapine (IS)
(m/z 384.2 \rightarrow 253.2)