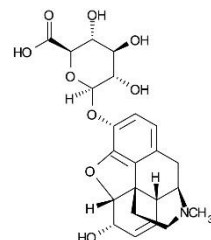


Conditions

Column: ACE Excel 3 SuperC18
Dimensions: 75 x 2.1 mm
Part Number: EXL-1111-7502U
Mobile Phase: A: 5 mM ammonium hydroxide pH 10.8 in H₂O
B: 5 mM ammonium hydroxide pH 10.8 in MeOH/H₂O (90:10 v/v)

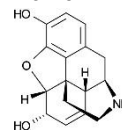
Time (mins)	%B
0	5
5	95

Flow Rate: 0.6 mL/min
Injection: 2 µL
Temperature: 60 °C
Detection: Varian 320 Triple Quadrupole MS
Electrospray voltage: +5 kV
Inlet capillary voltage: 30 V
CID with argon at 1.5 mTorr
Collision cell potential ranges from 5 to 17 V
Drying gas (nitrogen) temperature: 325 °C
Nebulizing gas (nitrogen) pressure: 35 psi
Extended Dynamic Range



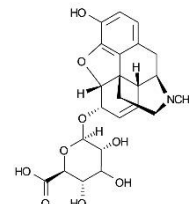
1. Morphine 3-β-D-glucuronide

LOD (est) 100 ppb
(*m/z* 462.0 → 285.9)



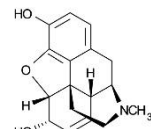
2. Normorphine

LOD (est) 100 ppb
(*m/z* 272.0 → 165.0)



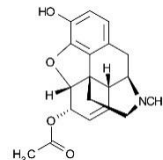
3. Morphine 6-β-D-glucuronide

LOD (est) 100 ppb
(*m/z* 462.0 → 285.9)



4. Morphine

LOD (est) 20 ppb
(*m/z* 286.0 → 200.9)



5. 6-Acetylmorphine

LOD (est) 10 ppb
(*m/z* 328.0 → 164.9)

