

Paeonia Lactiflora Extract HPLC Fingerprint

ACE[®]
Ultra-inert
UHPLC & HPLC Columns

Application #AN3820

Conditions

Column: ACE 5 C18
Dimensions: 250 x 4.6 mm
Part Number: ACE-121-2546
Mobile Phase: A: 0.1% phosphoric acid in H₂O
B: MeCN

Time (mins)	%B
0	10
5	15
25	22
45	70
46	80
50	80

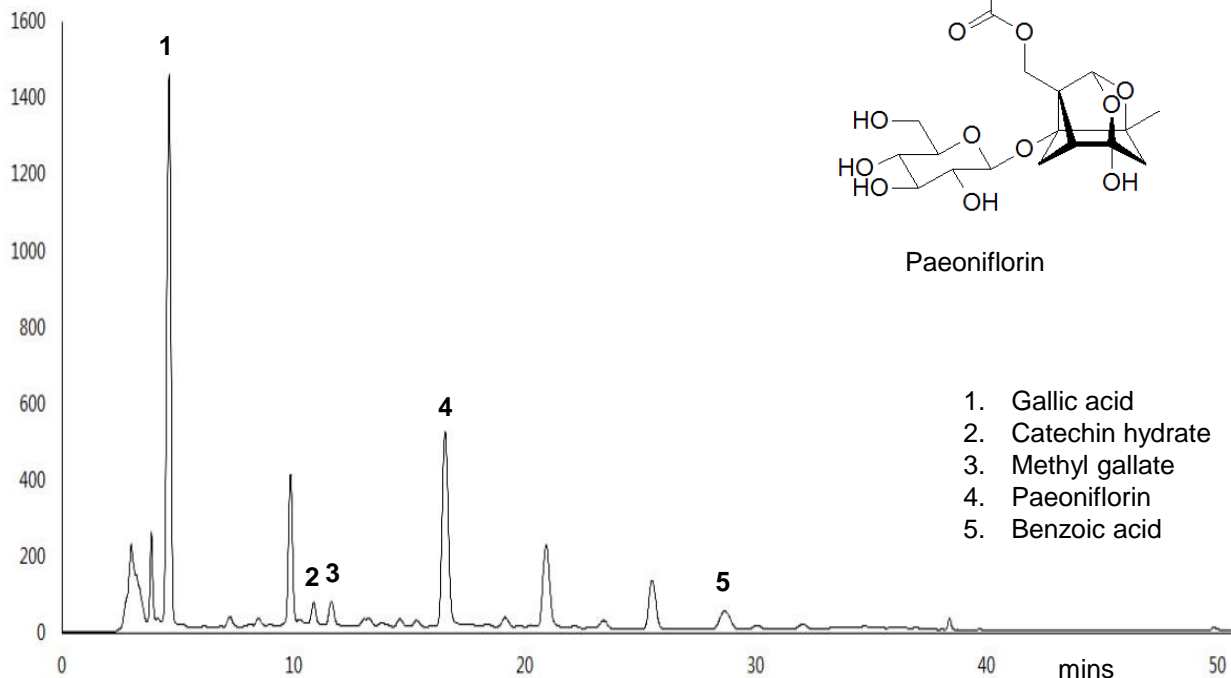
Flow Rate: 1 mL/min

Injection: 20 µL

Temperature: 25 °C

Detection: UV, 254 nm

Sample: *P. lactiflora* root extracted with boiling water and polysaccharides removed by precipitation



Choi H-J, Chung T-W, Park M-J, Lee KS, Yoon Y, Kim HS, Lee JH, Kwon S-M, Lee S-O, Kim K-J, Baek J-H, Ha K-T. (2016) *Paeonia lactiflora* Enhances the Adhesion of Trophoblast to the Endometrium via Induction of Leukemia Inhibitory Factor Expression. PloS ONE 11(2): e0148232. doi:10.1371/journal.pone.0148232
© 2015 ACT Ltd. All rights reserved. All products are available worldwide.

For more information contact your local ACE distributor or visit
www.ace-hplc.com or email: info@ace-hplc.com


ACE[®]
UHPLC & HPLC
Columns