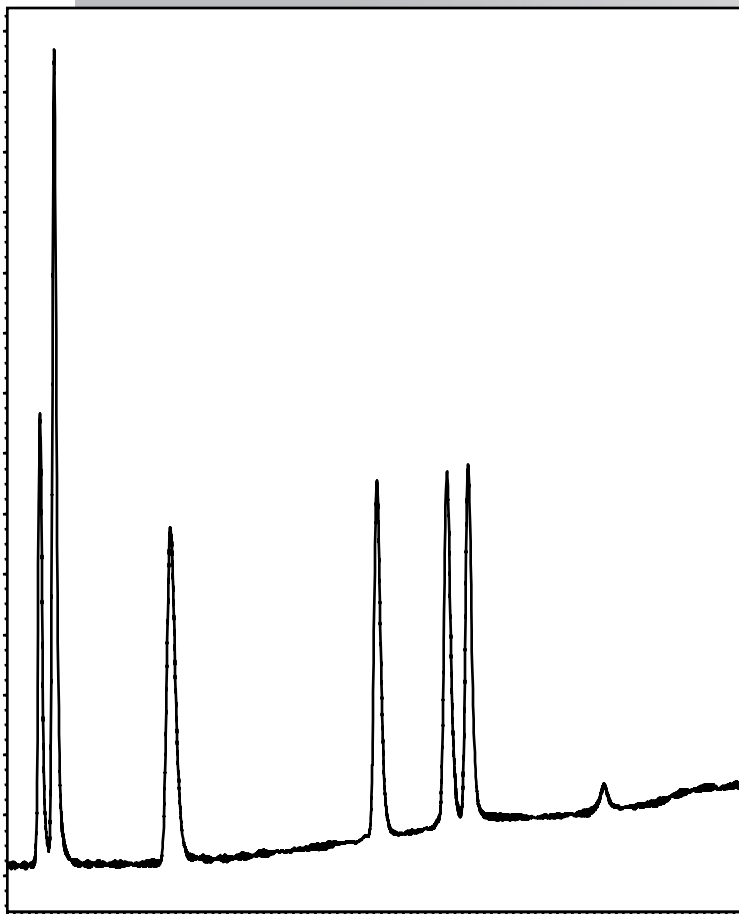




## Peptide Mix



- Column : **FortisBioC18 50x2.1mm 5 $\mu$**
- p/n : **BIO318-020205**
- Mobile Phase:
  - 10-40% B in 10mins**
  - A: 0.1% TFA**
  - B: ACN**
- Flow : **0.4 ml/min**
- Temp : **25°C**
- $\lambda$  : **220nm**

- 1. GLY-TYR (238.2 MW)**
- 2. VAL-TYR-VAL (379.5 MW)**
- 3. MET-Enkephalin (573.7 MW)**
- 4. LEU –Enkephalin (555.6 MW)**
- 5. Angiotensin II (1046.2 MW)**