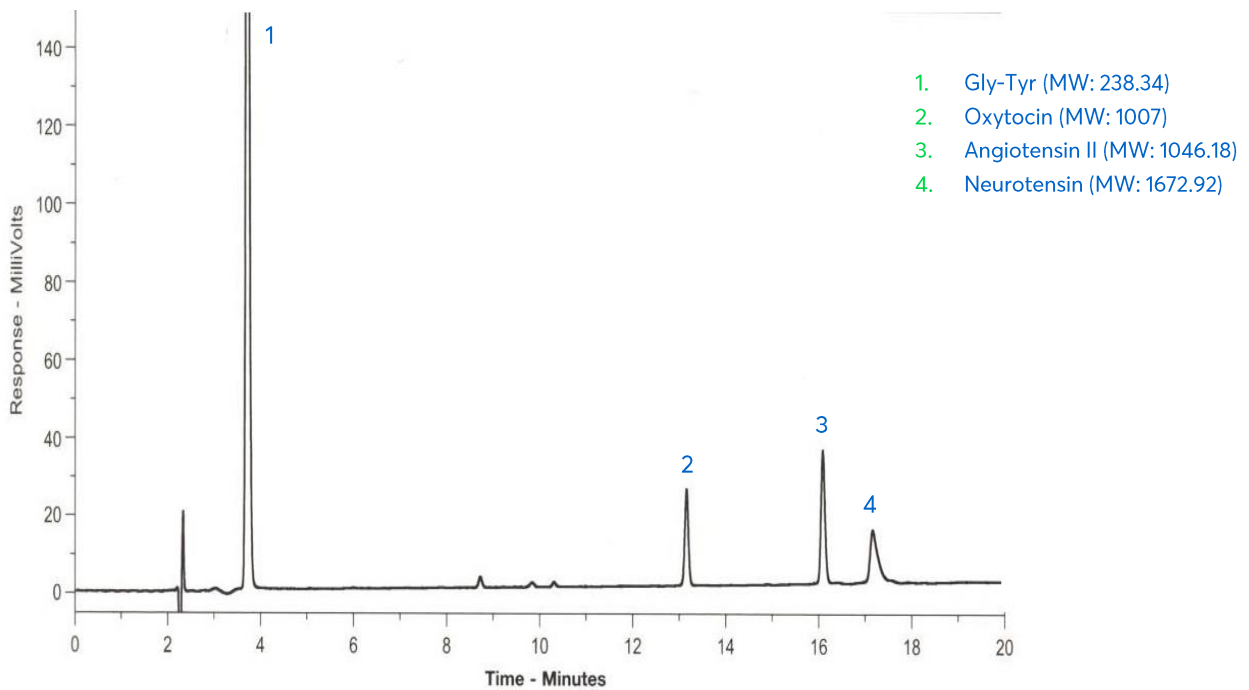


Application note #3930

Peptide Test Mix



Method Details

CONDITIONS

Column: Avantor® ACE® 5 C18-300
 Dimensions: 250 x 4.6 mm
 Mobile Phase: A: 0.1% trifluoroacetic acid in H₂O
 B: 0.1% trifluoroacetic acid in MeCN

Gradient:

Time (mins)	%B
0	10
25	40

Flow Rate: 2 mL/min
 Injection: 5 µL
 Temperature: Ambient
 Detection: UV, 220 nm

ORDERING TABLE

Product	Details	Size	Part Number
Avantor® ACE® 5 C18-300	HPLC Column	250 x 4.6 mm	ACE-221-2546
Acetonitrile	VWR CHROMANORM® gradient grade	2.5 L	83639.320
Water	VWR CHROMANORM® gradient grade	2.5 L	83650.320
Trifluoroacetic acid	VWR HiPerSolv CHROMANORM® for LC-MS	10 x 1 mL	85049.001