

# Pharmaceutically Relevant Compounds and Comparison (II)

**ACE**<sup>®</sup>  
Ultra-inert  
UHPLC & HPLC Columns

Application #AN1630

## Conditions

Column:

ACE Excel 3 CN-ES  
ACE Excel 3 C18-Amide  
ACE Excel 3 C18-PFP

Dimensions:

100 x 3.0 mm

Part Numbers:

EXL-1113-1003U, EXL-1112-1003U, EXL-1110-1003U

Mobile Phase:

A: 20 mM ammonium formate in H<sub>2</sub>O

B: 20 mM ammonium formate in MeOH

Flow Rate:

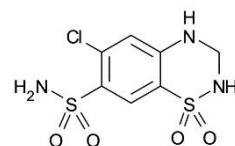
0.6 mL/min

Temperature:

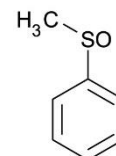
40 °C

Detection:

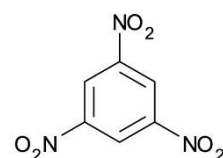
UV



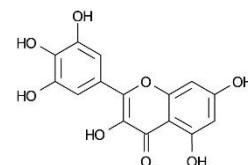
1. Hydrochlorothiazide



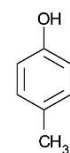
2. Methylphenylsulfoxide



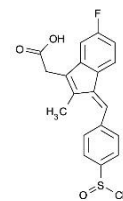
3. 1,3,5-Trinitrobenzene



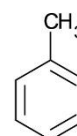
4. Myricetin



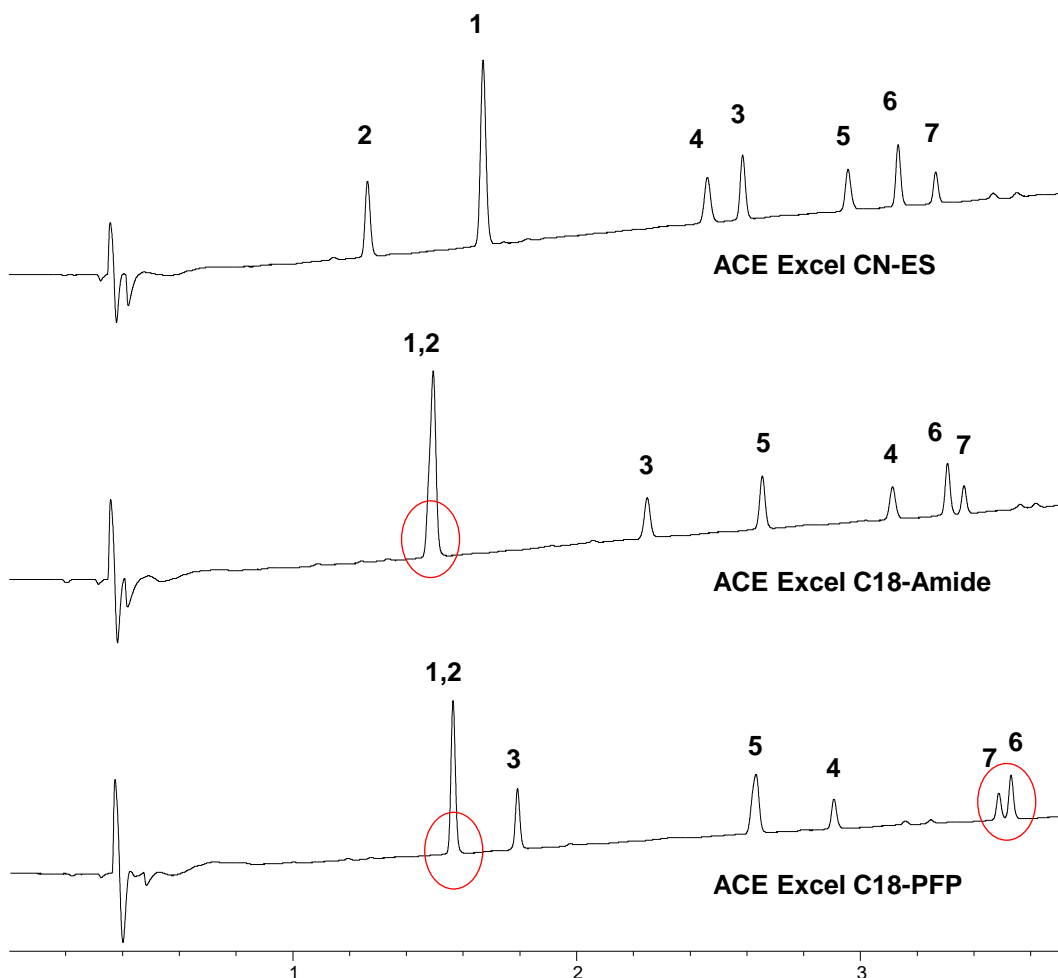
5. p-Cresol



6. Sulindac



7. Toluene



© 2015 ACT Ltd. All rights reserved. All products are available worldwide.

For more information contact your local ACE distributor or visit  
[www.ace-hplc.com](http://www.ace-hplc.com) or email: [info@ace-hplc.com](mailto:info@ace-hplc.com)



**ACE**<sup>®</sup>  
UHPLC & HPLC  
Columns