

# Phosphatidylethanol Biomarker Analysis by UHPLC-MS/MS

**ACE**<sup>®</sup>  
Ultra-inert  
UHPLC & HPLC Columns

Application #AN3400

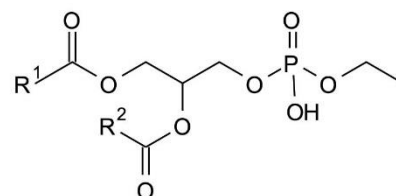
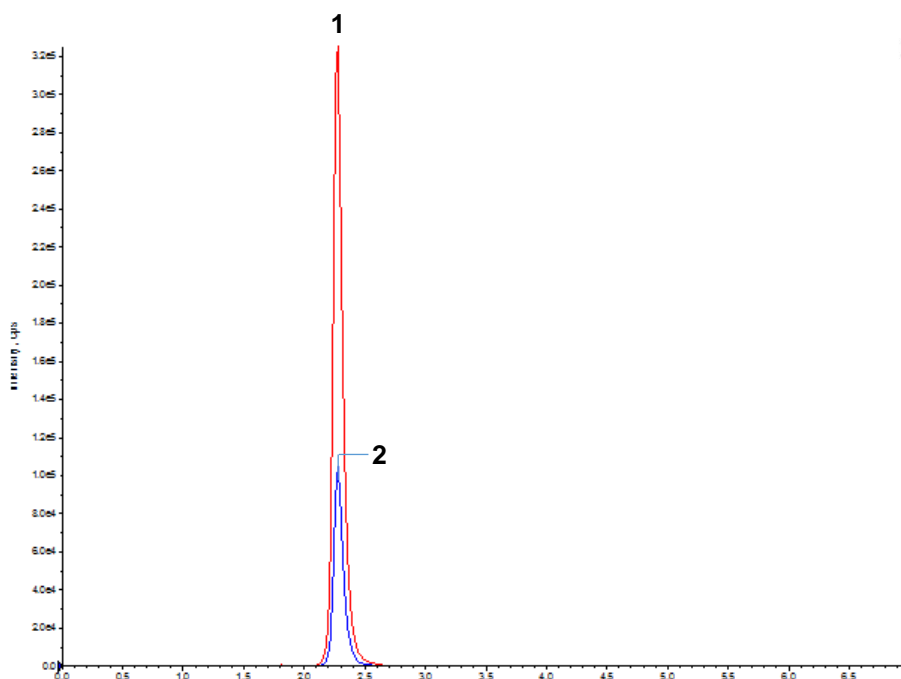
## Conditions

Column: ACE 2 C4  
Dimensions: 100 x 2.1 mm  
Part Number: EXL-103-1002U  
Mobile Phase: A: 2 mM ammonium acetate/MeCN (20:80 v/v)  
B: IPA

Time (mins)	%B
0.00	10
1.00	10
3.00	60
3.01	100
5.00	100
5.10	10

Flow Rate: 0.4 mL/min  
Injection: 5 µL  
Temperature: 40 °C  
Detection: AB SCIEX triple quad 5500  
Turbo IonSpray negative mode ESI  
IonSpray Voltage: -4500 V  
Temperature: 650 °C

Phosphatidylethanol (PEth) measurement in blood is used as a biomarker of chronic alcohol use/abuse.



Phosphatidylethanol

1. R<sup>1</sup>/R<sup>2</sup> = 18:1/18:1  
(*m/z* 701.4 → 281.2)

2. R<sup>1</sup>/R<sup>2</sup> = 16:1/16:1  
(*m/z* 701.4 → 255.1)

Reproduced with permission of Biotage GB Ltd, UK

© 2015 ACT Ltd. All rights reserved. All products are available worldwide.



For more information contact your local ACE distributor or visit  
[www.ace-hplc.com](http://www.ace-hplc.com) or email: [info@ace-hplc.com](mailto:info@ace-hplc.com)