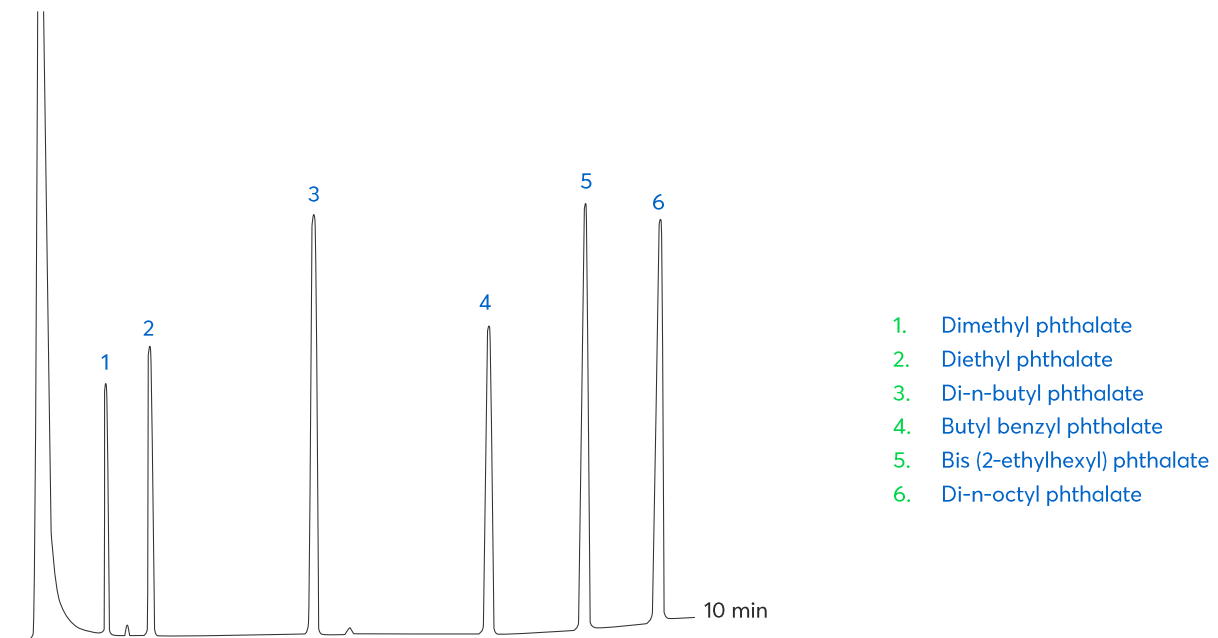


## Application note # C-13104

# Phthalate Esters using the Avantor<sup>®</sup> Hichrom HI-1 Phase (EPA Method 606)



**Figure 1:** Separation of phthalate esters using the Avantor<sup>®</sup> Hichrom HI-1 phase (EPA Method 606).

# Method Details

## CONDITIONS

Oven Program:	150 °C, 15 °C/min, 270 °C
Carrier Gas:	Helium, 20 mL/min
Injector:	Split, 250 °C, 1.0 µL
Detector:	FID, 300 °C
Sample Dilution:	2000 µg/mL each in methanol

*Always check the latest and official method information from the EPA prior to analysis.*

The HI-1 is a versatile general-purpose column with an apolar 100% dimethylpolysiloxane stationary phase.

Suitable for a wide range of applications including PCBs, solvent impurities, natural gases, essential oils, pesticides, semi-volatiles and drugs of abuse.

## ORDERING TABLE

Product	Details	Dimensions	Part Number
Avantor® Hichrom HI-1	GC Column	0.53 mm, 1.50 µm, 15 m	HI01-53-150-15