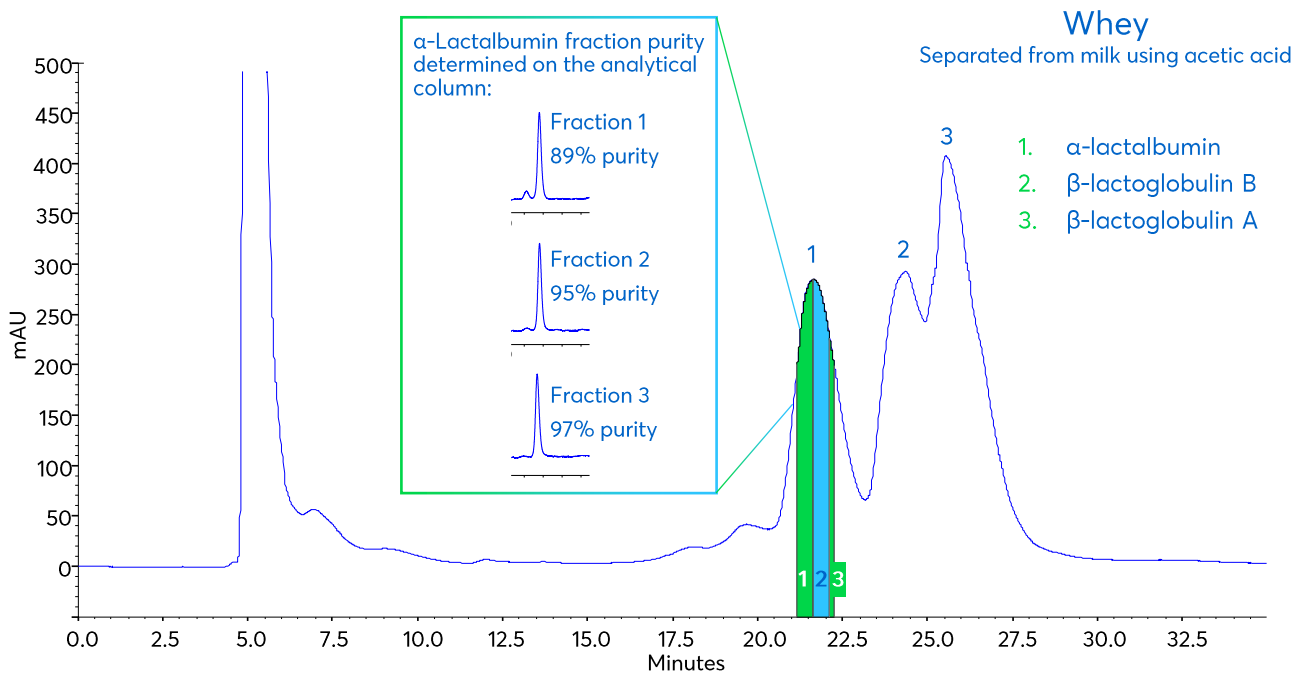


Application note #7760

Preparative Scale Fractionation of α -Lactalbumin from Whey with Purity Confirmation



Method Details

ANALYTICAL CONDITIONS

Column: Avantor® ACE® 3 C4-300
 Particle Size: 3 µm
 Dimensions: 150 x 2.1 mm
 Mobile Phase: A: 0.01% TFA in H₂O
 B: 0.01% TFA in MeCN

Gradient:

Time (mins)	% B
0	33
5	33
32	43
35	80

Flow Rate: 0.2 mL/min
 Injection Volume: 1 µL
 Temperature: 45 °C
 Detection: UV, 210 nm

PREPARATIVE CONDITIONS

Column: Avantor® ACE® 5 C4-300
 Particle Size: 5 µm
 Dimensions: 150 x 21.2 mm
 Mobile Phase: A: 0.01% TFA in H₂O
 B: 0.01% TFA in MeCN

Gradient:

Time (mins)	% B
0	33
5	33
32	43
35	80

Flow Rate: 21.2 mL/min
 Injection Volume: 3 mL
 Temperature: 22 °C
 Detection: UV, 210 nm

ORDERING TABLE

Product	Details	Size	Part Number
Avantor® ACE® 3 C4-300	HPLC Column	150 x 2.1 mm	ACE-213-1502
Avantor® ACE® 5 C4-300	Preparative Column	150 x 21.2 mm	ACE-223-1520
Acetonitrile	VWR CHROMANORM® super gradient grade	2.5 L	83639.320
Water	VWR CHROMANORM® super gradient grade	2.5 L	83650.320
Trifluoroacetic acid	VWR HiPerSolv CHROMANORM® for LC/MS	10 x 1 mL	85049.001