

# Proanthocyanidins from Cinnamon Bark Extract

**ACE**<sup>®</sup>  
Ultra-inert  
UHPLC & HPLC Columns

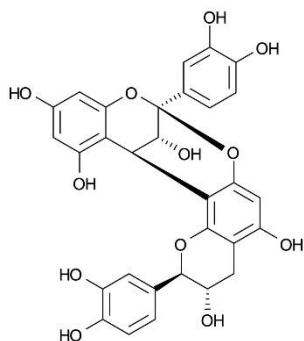
Application #AN3510

## Conditions

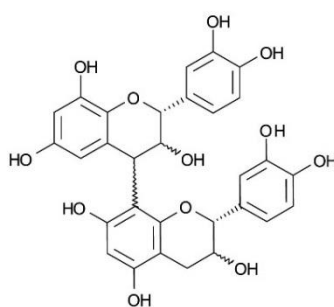
Column: ACE 3 C18  
Dimensions: 250 x 4.6 mm  
Part Number: ACE-111-2546  
Mobile Phase: A: 1% acetic acid in H<sub>2</sub>O  
B: MeCN

Time (mins)	%B
0	36
35	36
40	50
45	100
55	0
60	0

Flow Rate: 0.75 mL/min  
Temperature: Ambient  
Detection: UV, 280 nm  
Sample: Cinnamon bark extract thiolysed with benzyl mercaptan



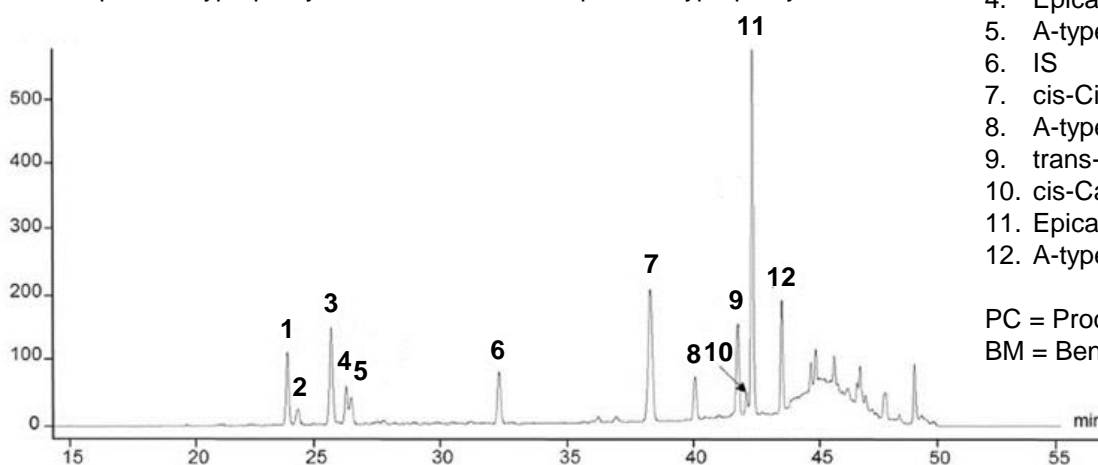
Example of A type procyanidin dimer



Example of B type procyanidin dimer

1. Catechin
2. A-type PC dimer
3. A-type PC trimer
4. Epicatechin
5. A-type PC trimer
6. IS
7. cis-Cinnamic acid
8. A-type PC-BM trimer
9. trans-Cinnamic acid
10. cis-Catechin-BM
11. Epicatechin-BM
12. A-type PC-BM dimer

PC = Procyanidin  
BM = Benzyl mercaptan adduct



Williams, A. R. *et al.* Anthelmintic activity of *trans*-cinnamaldehyde and A and B-type proanthocyanidins derived from cinnamon (*Cinnamomum verum*). *Sci. Rep.* 5, 14791; doi:10.1038/srep14791 (2015).

© 2015 ACT Ltd. All rights reserved. All products are available worldwide.



For more information contact your local ACE distributor or visit  
[www.ace-hplc.com](http://www.ace-hplc.com) or email: [info@ace-hplc.com](mailto:info@ace-hplc.com)