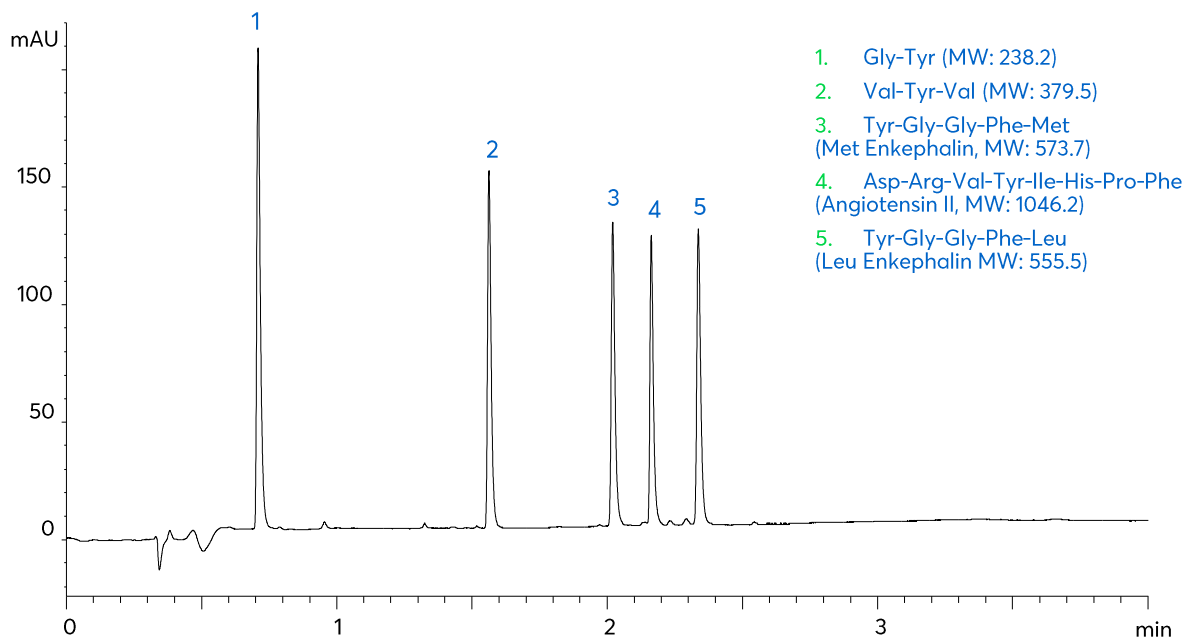


Application note #4690

Rapid Separation of Peptides



Method Details

CONDITIONS

Column: Avantor® ACE® Excel 1.7 C18
 Dimensions: 50 x 3.0 mm
 Mobile Phase: A: 0.05% TFA in H₂O
 B: 0.05% TFA in MeCN

Time (mins)	% B
0.0	5
3.0	40
4.0	90
5.5	90
10.5	5

Flow Rate: 0.8 mL/min
 Injection: 1 µL
 Temperature: 60 °C
 Detection: UV, 220 nm

ORDERING TABLE

Product	Details	Size	Part Number
Avantor® ACE® Excel 1.7 C18	UHPLC Column	50 x 3.0 mm	EXL-171-0503U
Acetonitrile	VWR CHROMANORM® super gradient grade	2.5 L	83639.320
Water	VWR CHROMANORM® super gradient grade	2.5 L	83650.320
Trifluoroacetic acid	VWR HiPerSolv CHROMANORM® for LC/MS	10 x 1 mL	85049.001