

Salicylic Acid in Cell Extracts

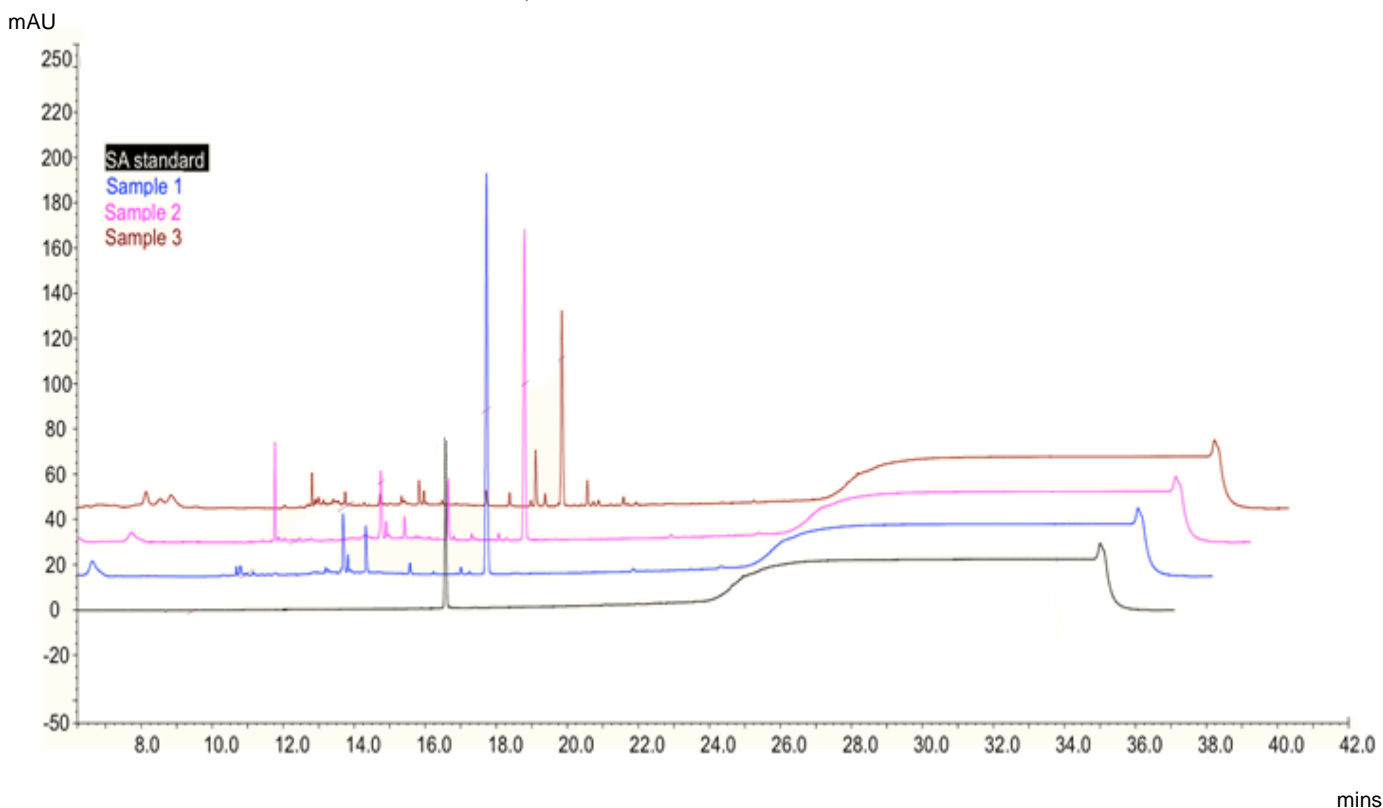
Application #AN1380

Conditions

Column: ACE UltraCore 5 SuperC18
Dimensions: 150 x 4.6 mm
Part Number: CORE-5A-1546U
Mobile Phase: A: 0.1% TFA in H₂O
B: 0.1% TFA in MeCN

Time (mins)	%B
0	0.8
22	64
23	100
33	100
34	0

Flow Rate: 1 mL/min
Detection: UV, 250 nm



Reproduced with permission of University of Sheffield, UK

© 2015 ACT Ltd. All rights reserved. All products are available worldwide.