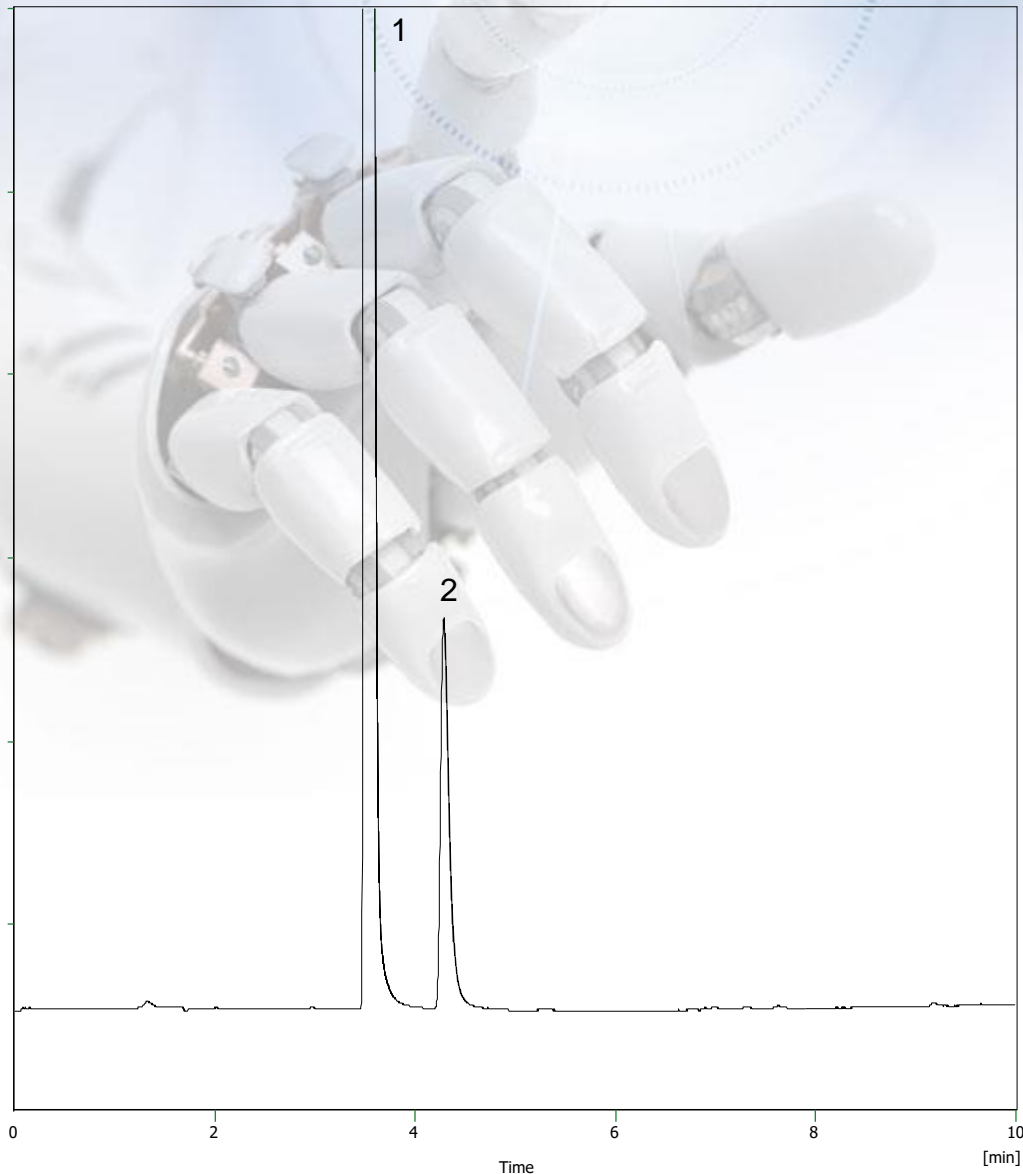


Solpadol



➤ Column : **Evosphere AQUA 150x4.6
3um**

➤ p/n : **EVOAQ-050703**

➤ Mobile Phase:

A- Water + 0.1% Formic acid

B- ACN + 0.1% Formic acid

**10-50% B in 10 mins, 5 min
hold**

➤ Flow : **1.0 ml/min**

➤ Temp : **AMB**

➤ λ : **254nm**

1. **Acetaminophen**

2. **Co-codamol**

