

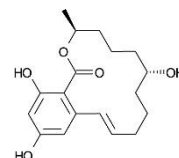
## Application #AN1830

### Conditions

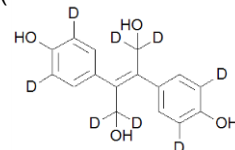
Column: ACE UltraCore 2.5 SuperC18  
Dimensions: 100 x 2.1 mm  
Part Number: CORE-25A-1002U  
Mobile Phase: A: 0.01 mM ammonium fluoride + 0.001% formic acid  
B: MeCN

Time (mins)	%B
0.0	25
0.5	25
7.0	35
7.5	35
10.5	60
12.5	90

Flow Rate: 0.5 mL/min  
Temperature: 45 °C  
Detection: Positive or negative ESI  
MRM data

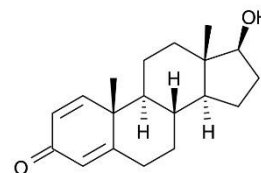


1.  $\alpha$ - and  $\beta$ -Zearalenol  
( $m/z$  319.17  $\rightarrow$  275.12)

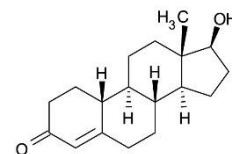


2. Diethylstilbestrol-d8  
( $m/z$  275.23  $\rightarrow$  245.09)

Also analysed in -ESI:  
Talaranol and zeranol-d4  
Talaranol and zeranol  
Zearalenone  
Hexestrol  
Diethylstilbestrol  
Dienestrol

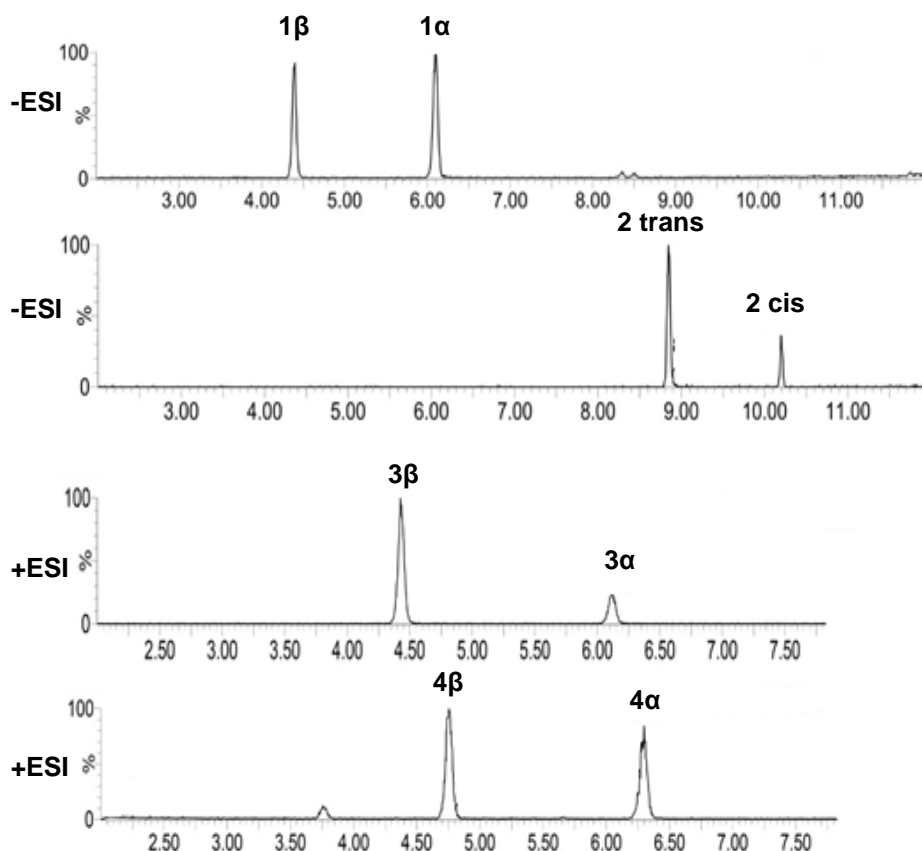


3.  $\alpha$ - and  $\beta$ -Boldenone  
( $m/z$  287.17  $\rightarrow$  121.12)



4.  $\alpha$ - and  $\beta$ -Nortestosterone  
( $m/z$  275.23  $\rightarrow$  109.09)

Also analysed in +ESI:  
Hydroxystanozolol  
Hydroxystanozolol-d3  
Methyltestosterone  
Methyltestosterone-d3  
 $\beta$ -Nortestosterone-d3  
 $\beta$ -Trenbolone  
 $\alpha$ -Trenbolone



Reproduced with permission of Fera Science Ltd, York, UK

© 2015 ACT Ltd. All rights reserved. All products are available worldwide.

For more information contact your local ACE distributor or visit  
[www.ace-hplc.com](http://www.ace-hplc.com) or email: [info@ace-hplc.com](mailto:info@ace-hplc.com)