

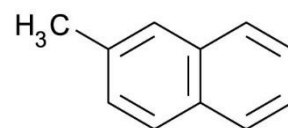
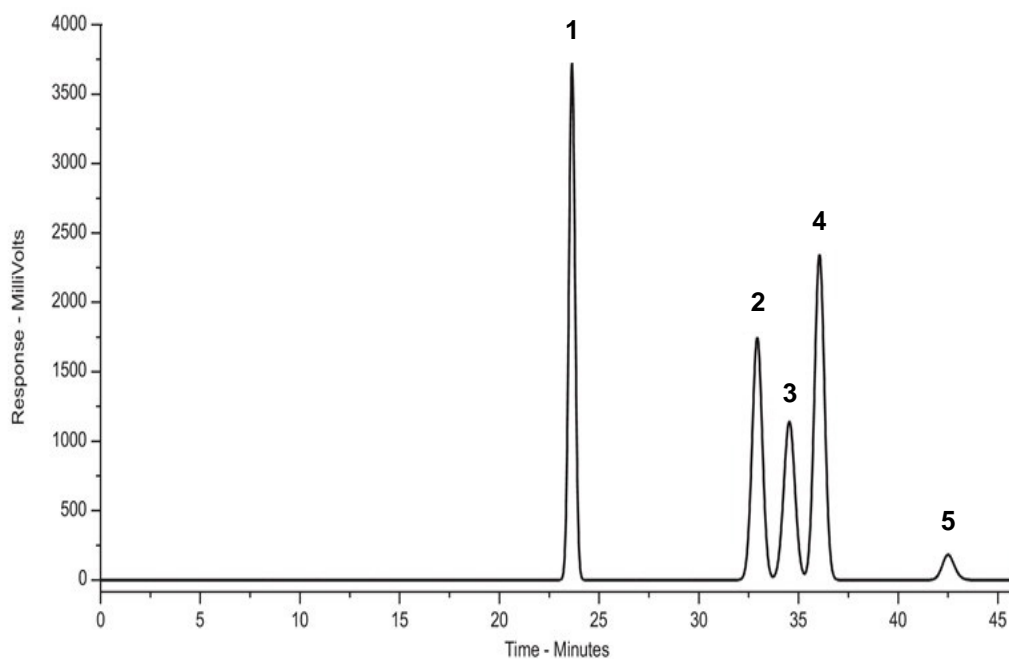
Naphthalenes (Substituted)

ACE[®]
Ultra-inert
UHPLC & HPLC Columns

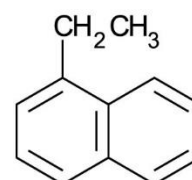
Application #AN3690

Conditions

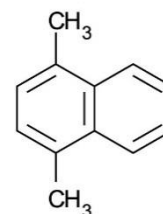
Column: ACE 5 C18
Dimensions: 250 x 4.6 mm
Part Number: ACE-121-2546
Mobile Phase: MeCN/H₂O (51:49 v/v)
Flow Rate: 1.5 mL/min
Temperature: 18 °C
Detection: UV, 225 nm



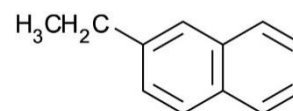
1. 2-Methylnaphthalene



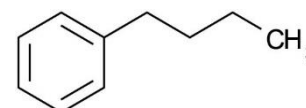
2. 1-Ethynaphthalene



3. 1,4-Dimethylnaphthalene



4. 2-Ethynaphthalene



5. n-Butylbenzene

Reproduced with permission of Department of Environmental Chemistry, University of Glasgow, UK
© 2015 ACT Ltd. All rights reserved. All products are available worldwide.



For more information contact your local ACE distributor or visit
www.ace-hplc.com or email: info@ace-hplc.com