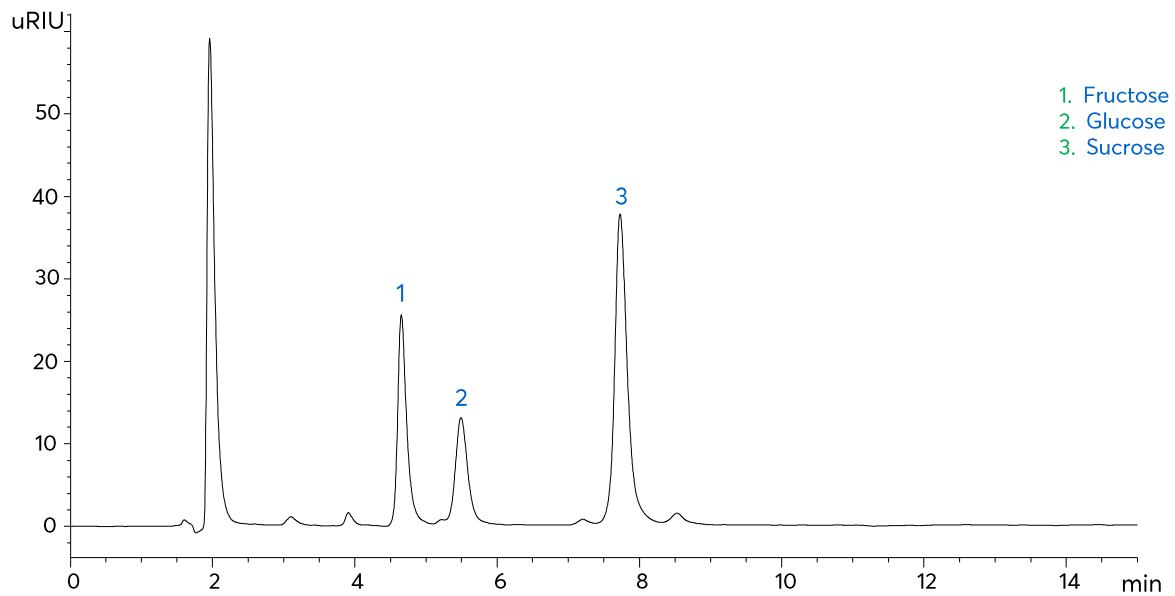


Application note #4160

Sugars – Orange Juice



Method Details

CONDITIONS

Column:	Avantor® ACE® Excel® 3 NH ₂
Particle Size:	3 μm
Dimensions:	150 x 4.6 mm
Mobile Phase:	MeCN/H ₂ O (75:25 v/v)
Flow Rate:	1 mL/min
Injection:	10 μL
Temperature:	35 °C
Detection:	RI, 35 °C
Sample:	100 μL orange juice in 900 μL mobile phase
System:	Chromaster 600

ORDERING TABLE

Product	Details	Size	Part Number
Avantor® ACE® Excel® 3 NH ₂	HPLC Column	150 x 4.6 mm	EXL-1114-1546U
Acetonitrile	VWR CHROMANORM® super gradient grade	2.5 L	83639.320
Water	VWR CHROMANORM® super gradient grade	2.5 L	83650.320