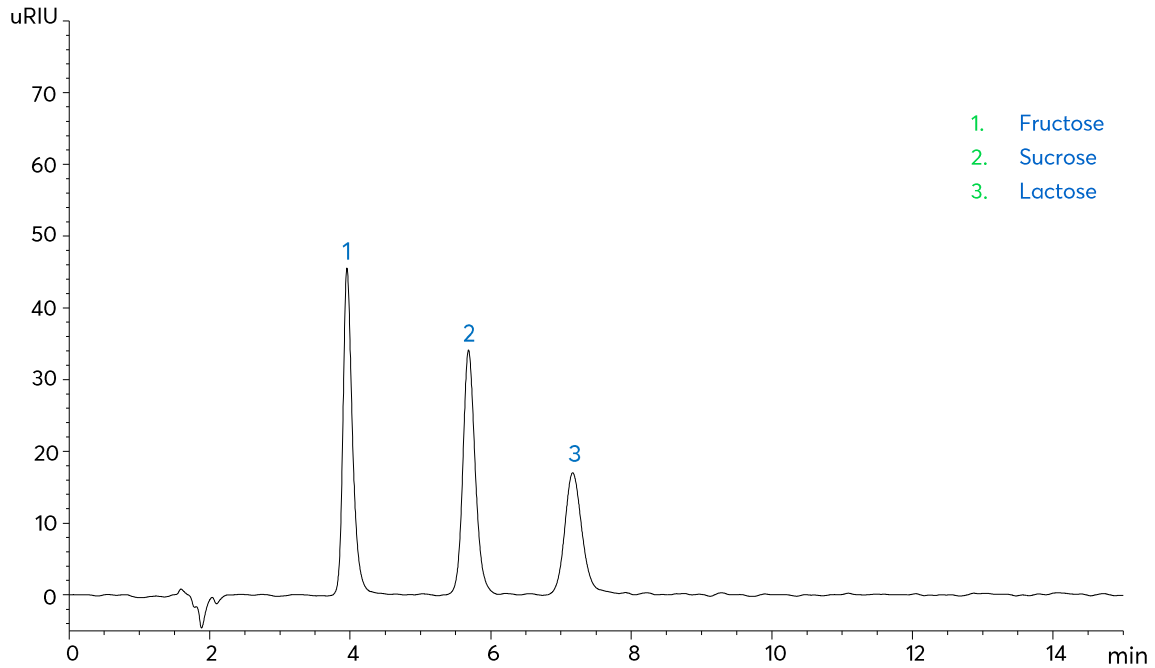


Application note #4030

Sugars Separation



Method Details

CONDITIONS

Column:	Avantor® ACE® Excel® 5 NH ₂
Particle Size:	5 µm
Dimensions:	150 x 4.6 mm
Mobile Phase:	MeCN/H ₂ O (70:30 v/v)
Flow Rate:	1 mL/min
Injection:	10 µL
Temperature:	35 °C
Detection:	RI, 35 °C
Sample:	5 mg/mL in mobile phase
System:	Chromaster 600

ORDERING TABLE

Product	Details	Size	Part Number
Avantor® ACE® Excel® 5 NH ₂	HPLC Column	150 x 4.6 mm	EXL-1214-1546U
Acetonitrile	VWR CHROMANORM® super gradient grade	2.5 L	83639.320
Water	VWR CHROMANORM® super gradient grade	2.5 L	83650.320