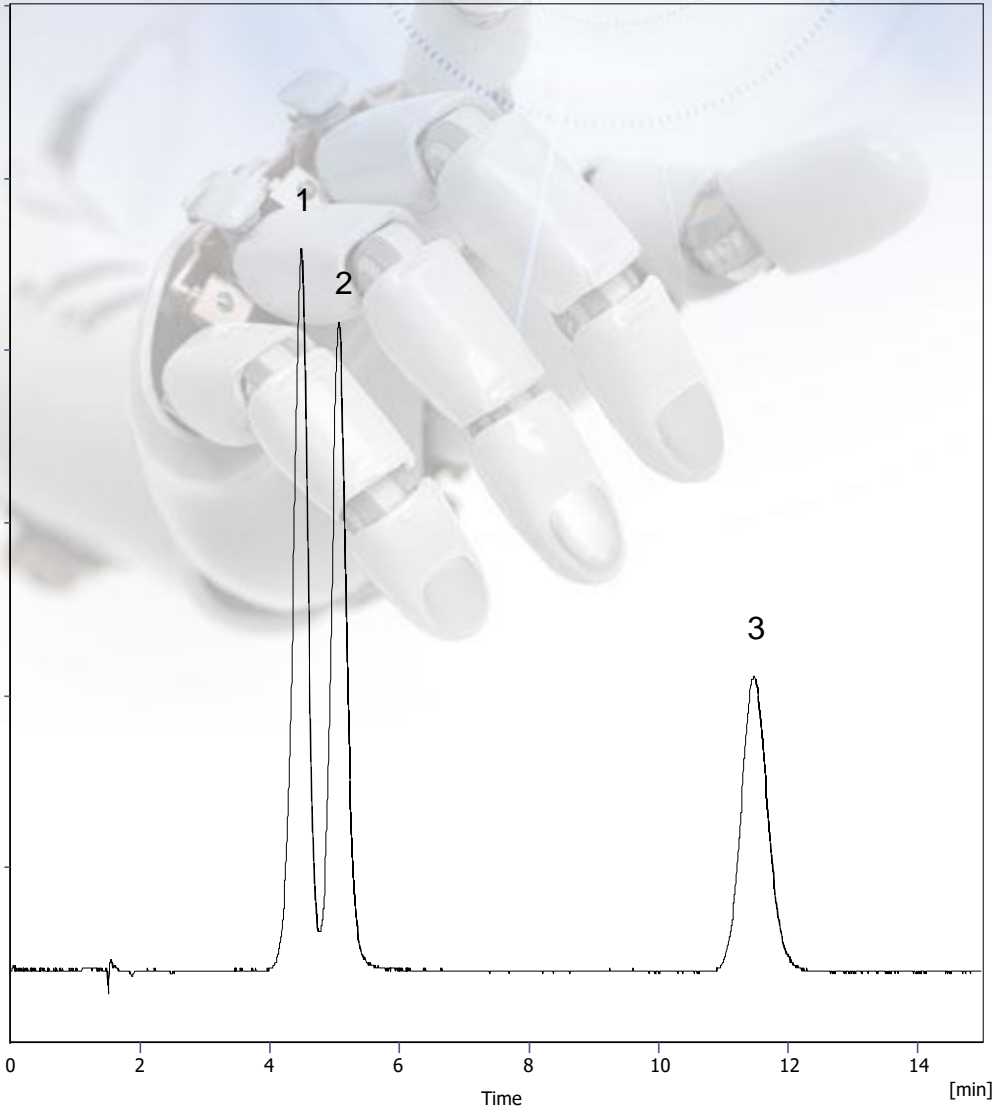


Sulfa Drugs



- Column : **Evosphere RP18-Amide 150x4.6 5um**
 - p/n : **EVORP18-050705**
 - Mobile Phase: **70:30 Water + 0.1% Formic acid:MeOH**
 - Flow : **1.0 ml/min**
 - Temp : **25°C**
 - λ : **254nm**
1. **Sulfathiazole**
 2. **Sulfamerazine**
 3. **Sulfamethoxazole**

