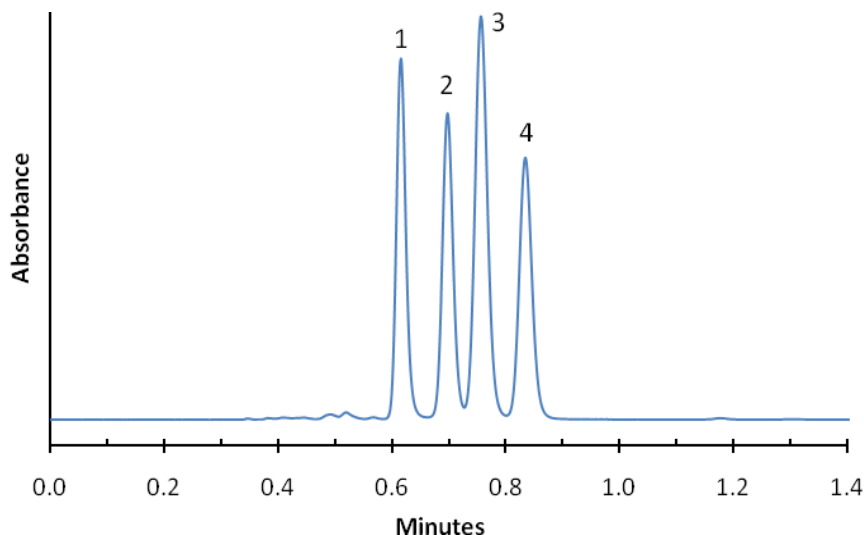


Application Note: 39-P

Rapid Separation of Sulfonyl Urea Drugs on HALO PFP Phase



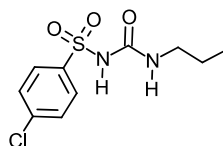
PEAK IDENTITIES:

1. Chlorpropamide
2. Acetohexamide
3. Glipizide
4. Tolazamide

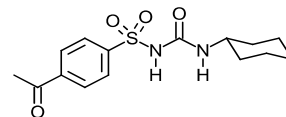
TEST CONDITIONS:

Column: 4.6 x 50 mm, HALO PFP
Part Number: 92814-409
Mobile Phase: 30/70--A/B
A= 0.02 M Phosphate buffer, pH=3.0
B= Methanol
Flow Rate: 1.5 mL/min.
Pressure: 200 Bar
Temperature: 30 °C
Detection: UV 254 nm, VWD
Injection Volume: 1.0 µL
Sample Solvent: Acetonitrile
Response Time: 0.02 sec.
Flow Cell: 2.5 µL semi-micro
LC System: Shimadzu Prominence UFLC XR
Extra column volume: ~14 µL

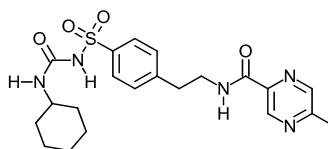
STRUCTURES:



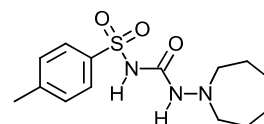
Chlorpropamide



Acetohexamide



Glipizide



Tolazamide

The sulfonyl urea drugs are used in the treatment of diabetes. They can be rapidly analyzed in less than 0.9 minutes using short, efficient HALO Fused Core PFP (perfluorophenylpropyl) columns.