

Analysis of Sulphur Compounds using the Avantor® Hichrom HI-VOC 2 Phase

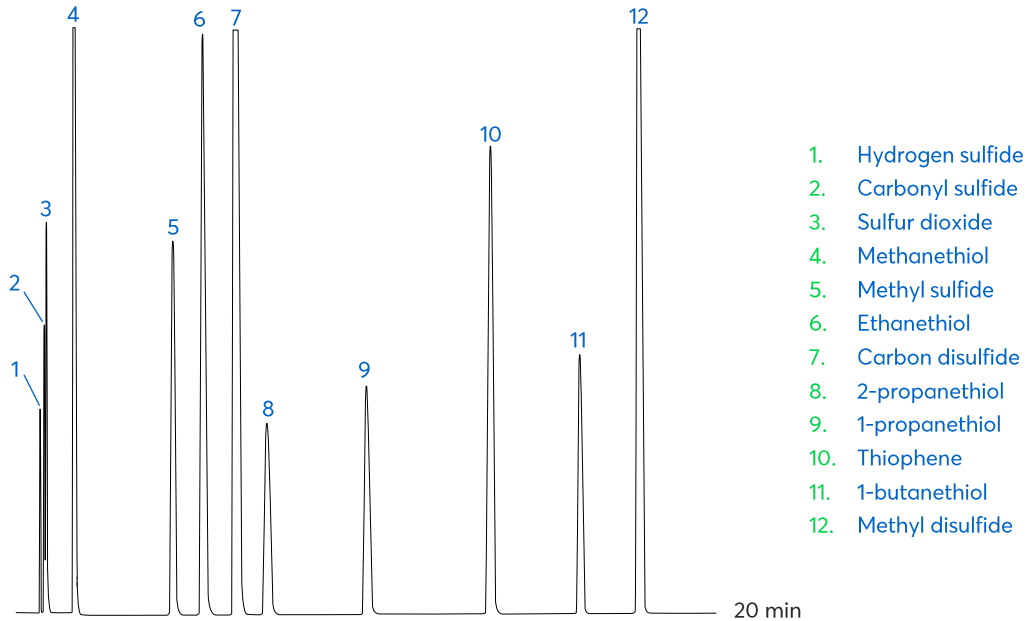


Figure 1: Analysis of sulphur compounds using the Avantor® Hichrom HI-VOC 2 phase.

Method Details

CONDITIONS

| | |
|---------------|-------------------------|
| Oven Program: | 30 °C, 5 °C/min, 130 °C |
| Carrier Gas: | Hydrogen, 3.8 mL/min |
| Injector: | 200 °C |
| Detector: | FPD, 200 °C |

The HI-VOC 2 is a unique application specific column for the analysis of volatile organic compounds (VOCs), solvents and purgeable compounds.

ORDERING TABLE

| Product | Details | Dimensions | Part Number |
|---------------------------|-----------|------------------------|----------------|
| Avantor® Hichrom HI-VOC 2 | GC Column | 0.53 mm, 5.00 µm, 30 m | HI65-53-500-30 |