

Sumatriptan and Promethazine by LC-MS/MS

ACE[®]
Ultra-inert
UHPLC & HPLC Columns

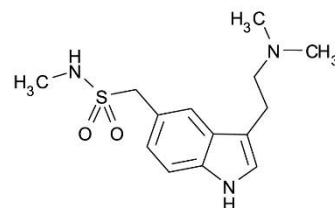
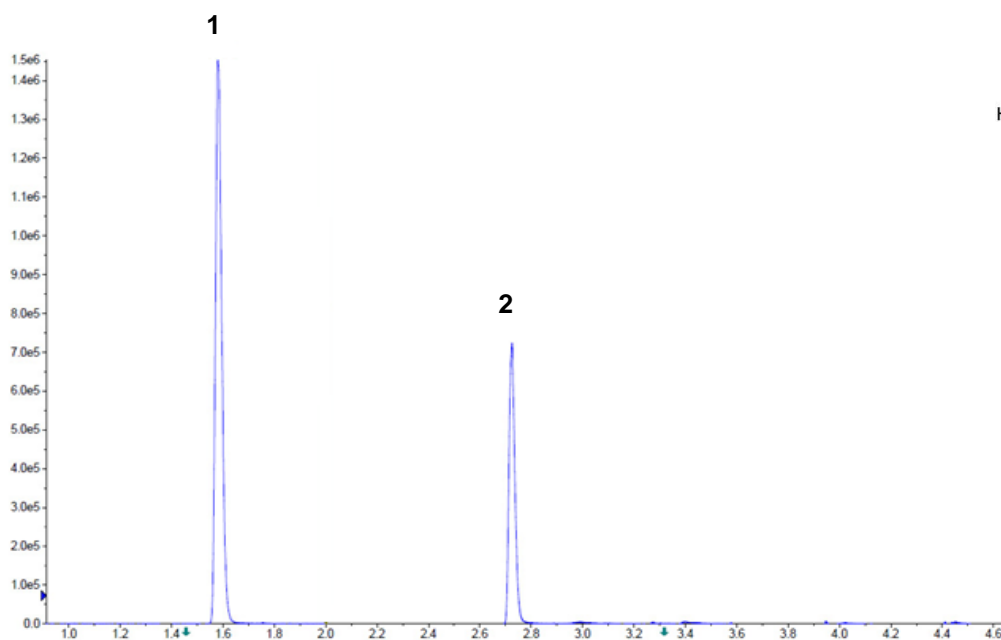
Application #AN2530

Conditions

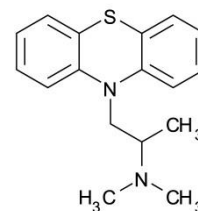
Column: ACE Excel 2 C18-PFP
Dimensions: 100 x 2.1 mm
Part Number: EXL-1010-1002U
Mobile Phase: A: 0.1% formic acid in H₂O
B: 0.1% formic acid in MeOH

Time (min)	%B
0.0	15
0.5	15
2.5	90
3.5	90
5.5	15

Flow Rate: 0.7 mL/min
Temperature: 50 °C
Detection: AB Sciex QTRAP 6500
DuoSpray Ion source (ESI/APCI)
Positive ion MRM mode



1. Sumatriptan
(*m/z* 296 → 58)



2. Promethazine
(*m/z* 286 → 86)

Reproduced with permission of Charles River Montreal, Canada
© 2015 ACT Ltd. All rights reserved. All products are available worldwide.

For more information contact your local ACE distributor or visit
www.ace-hplc.com or email: info@ace-hplc.com


ACE[®]
UHPLC & HPLC
Columns