

# Taxol in Fungal Extract by LC-MS/MS

**ACE**<sup>®</sup>  
Ultra-inert  
UHPLC & HPLC Columns

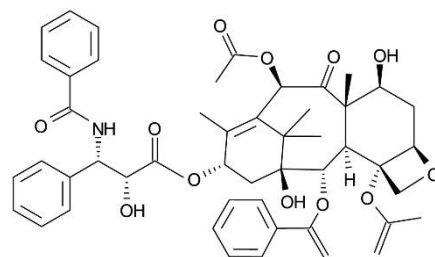
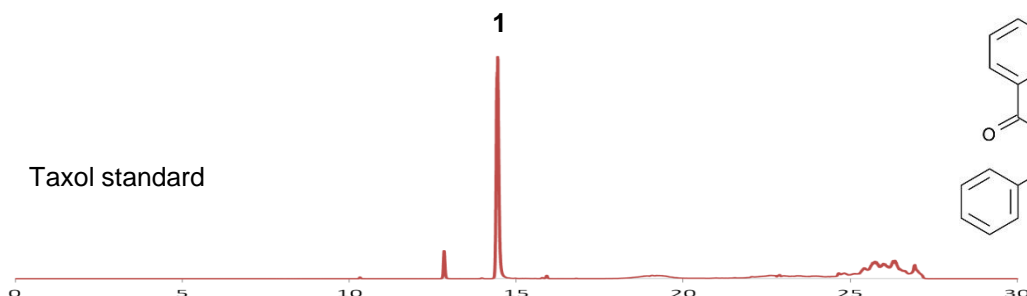
Application #AN1670

## Conditions

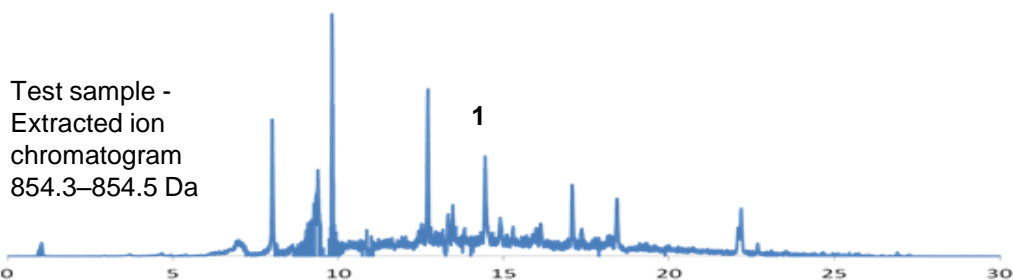
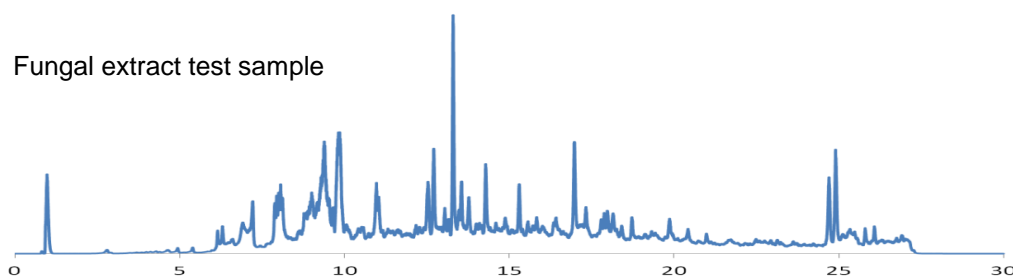
Column: ACE UltraCore 2.5 SuperC18  
Dimensions: 150 x 2.1 mm  
Part Number: CORE-25A-1502U  
Mobile Phase: A: 0.5% formic acid in H<sub>2</sub>O  
B: 0.5% formic acid in MeCN

Time (mins)	%B
0.0	10
1.0	10
3.0	40
22.0	60
25.0	95

Flow Rate: 0.35 mL/min  
Detection: Orbitrap Elite MS  
FT positive ion mode  
Collision induced dissociation isolation width 5 Da  
Normalised collision energy 32 eV  
Activation Q 0.25  
Activation times 10 ms



1. Taxol (Paclitaxel)



Reproduced with permission of University of Bristol, UK

© 2015 ACT Ltd. All rights reserved. All products are available worldwide.

For more information contact your local ACE distributor or visit  
[www.ace-hplc.com](http://www.ace-hplc.com) or email: [info@ace-hplc.com](mailto:info@ace-hplc.com)

  
**ACE**<sup>®</sup>  
UHPLC & HPLC  
Columns