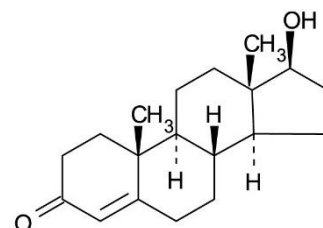
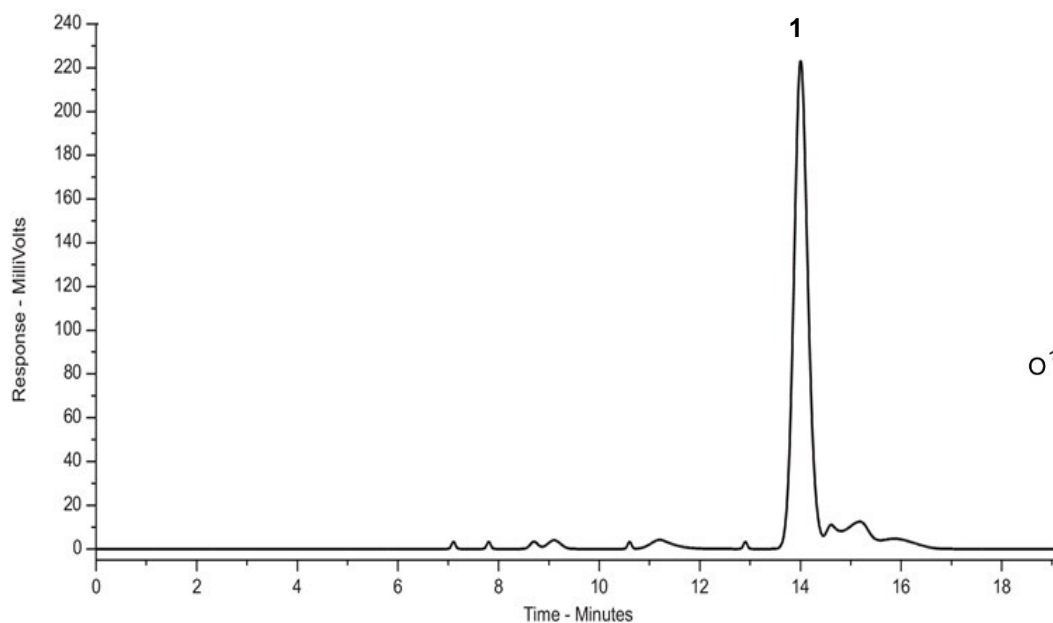


Conditions

Column: ACE 5 C18
Dimensions: 150 x 0.075 mm
Part Number: ACE-121-1500075
Mobile Phase: A: 0.1% formic acid in MeCN/0.1% formic acid in H₂O (10:90 v/v)
B: 0.1% formic acid in MeCN/0.1% formic acid in H₂O (90:10 v/v)

Time (mins)	%B
0	40
5	40
30	95

Flow Rate: 1 µL/min
Temperature: Ambient
Detection: ESI MS/MS
Positive ion mode



1. Testosterone