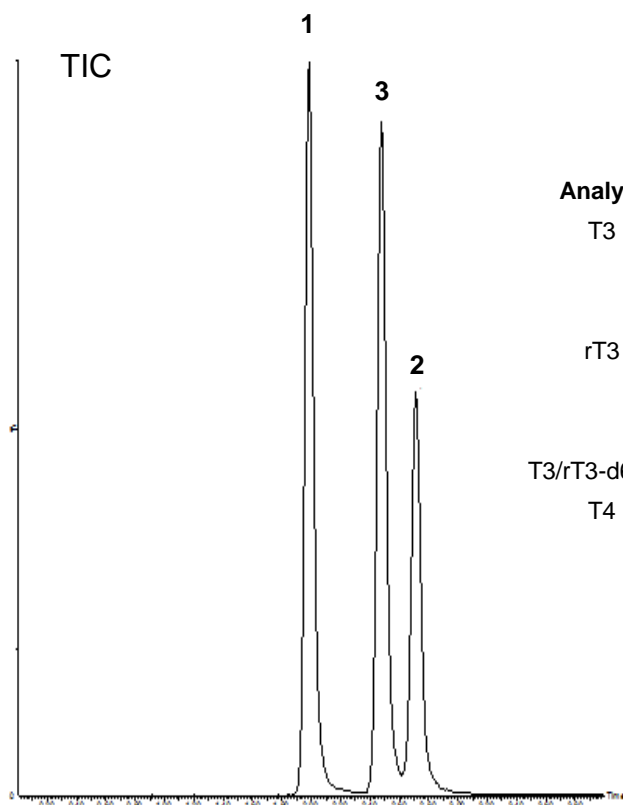


Conditions

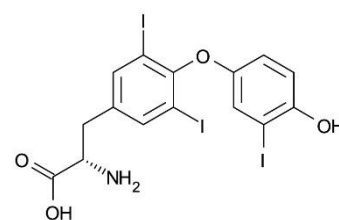
Column: ACE Excel 2 C18-AR
Dimensions: 100 x 2.1 mm
Part Number: EXL-109-1002U
Mobile Phase: A: 2 mM ammonium acetate, 0.1% formic acid in H₂O
B: 2 mM ammonium acetate, 0.1% formic acid in MeOH

Time (mins)	%B
0.0	60
3.0	77
3.1	60

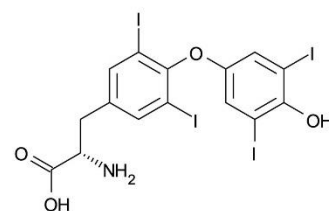
Flow Rate: 0.4 mL/min
Injection: 10 µL
Temperature: 40 °C
Detection: XEVO TQS triple quad MS
Desolvation temperature: 500 °C
Ion source temperature: 150 °C
Positive mode ESI, MRM



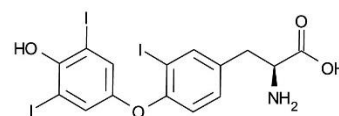
Analyte	Q1 (Da)	Q3 (Da)
T3	651.8	605.8
	(651.8)	(507.8)
	(651.8)	(478.9)
rT3	651.8	605.8
	(651.8)	(507.8)
	(651.8)	(478.9)
T3/rT3-d6 I.S.	657.8	611.8
T4	777.7	731.7
	(777.7)	(351)
	(777.7)	(633.8)



1. T3
(Tri-iodothyronine)



2. T4
(Thyroxine)



3. rT3
(Reversed tri-iodothyronine)