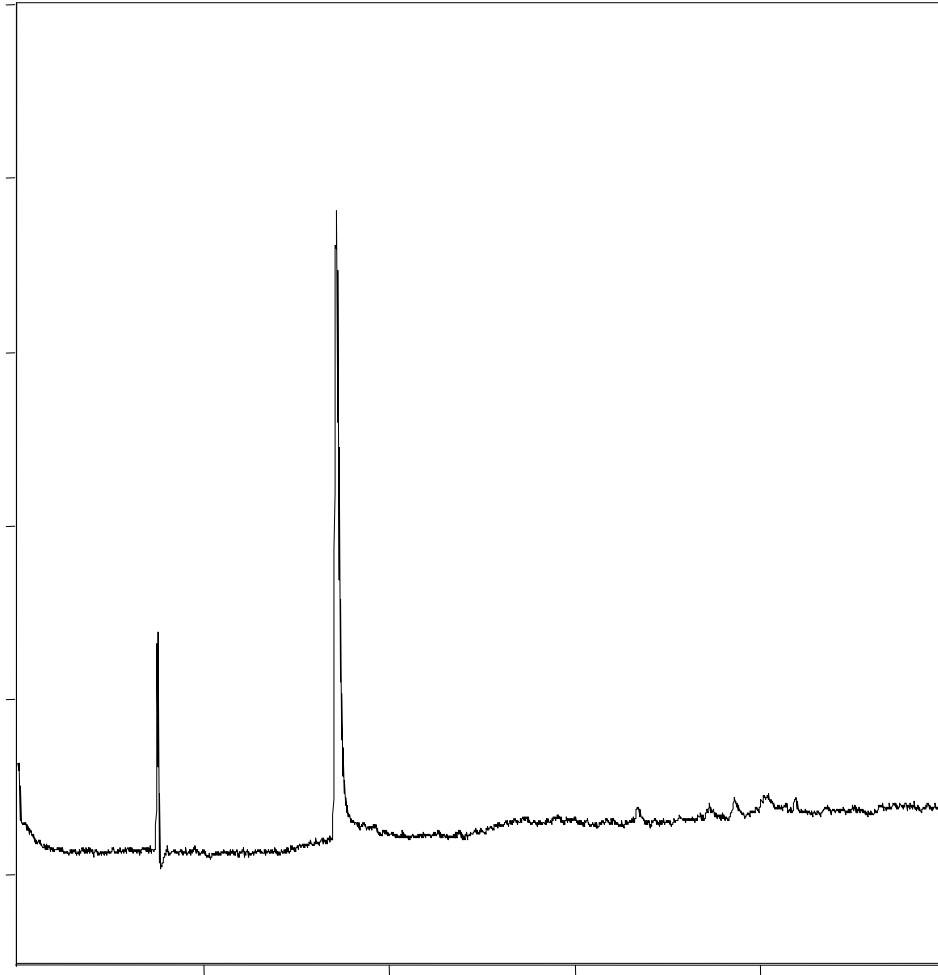


Tramadol



Column : **2.6 μ SpeedCore RP Amide
150x4.6mm**

p/n : **SPRA-050726**

Mobile Phase:

A: H₂O + 0.1% Formic acid

B: ACN

Gradient: **10-100% B in 10 minutes**

Flow : **1.0ml/min**

Temp : **25°C**

λ : **270nm**

1. Tramadol